



 morrillmotors®

 genteq®

 Century®

FASCO®

 ELCO®



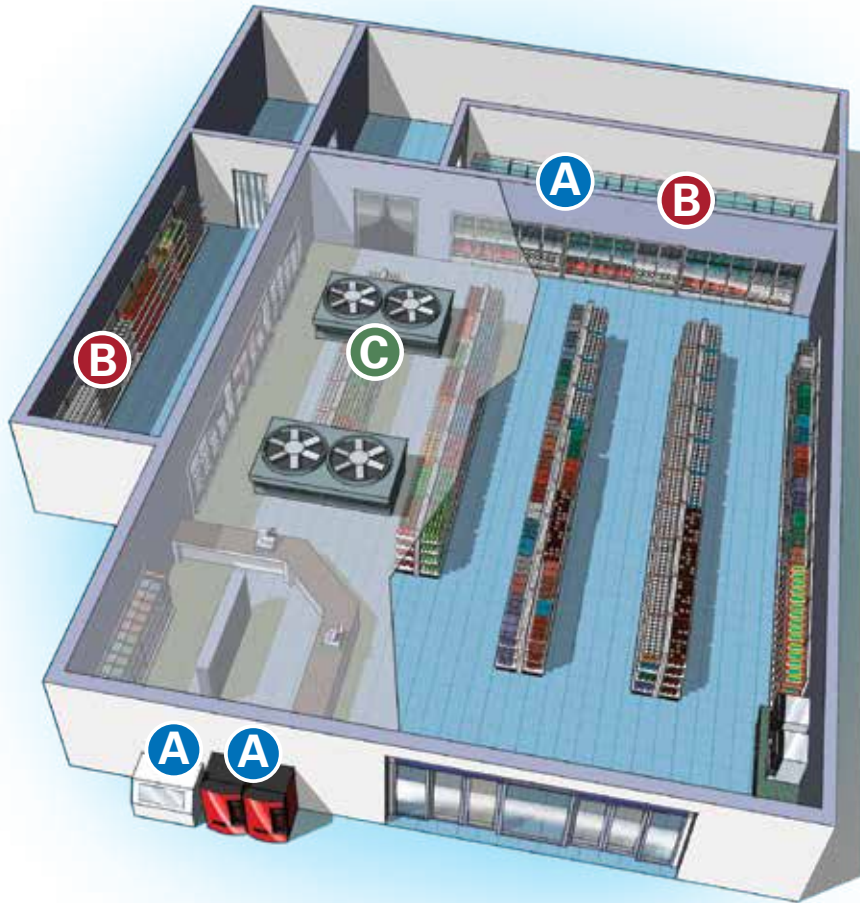
COMMERCIAL REFRIGERATION

REPLACEMENT MOTORS

 REGAL®

SMARTER STRONGER COOLER

APPLICATIONS
CONVENIENCE STORE 



A Display Case
Soda Vending Machine (outside)
Ice Freezer (outside)
Fountain Soda-Ice Machines

B Walk-in Freezers
Walk-in Coolers
Display Case

C Rooftop Condensers



ARKTIC® · SSC

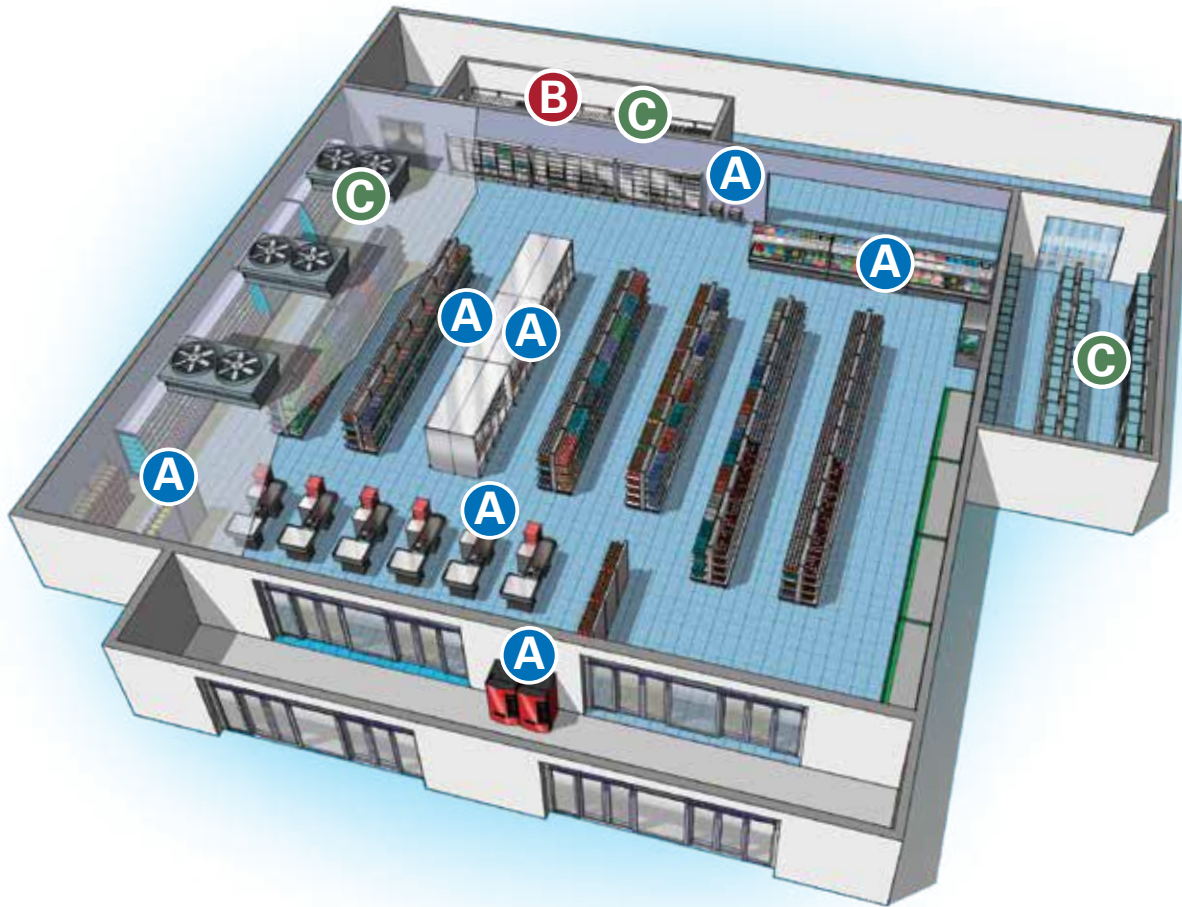
KRYO™ · SSC

ELCO®

FASCO®

APPLICATIONS

GROCERY STORE



- A** Produce Coolers
 Reach-in Glass Door Coolers
 Reach-in Glass Door Freezers
 Bakery/Deli Walk-up
 Soda Vending Machine
 Bottle Coolers at Registers
 Floral Display Cases
 Water Fountains

- B** Back of Store Walk-in Cooler
 Back of Store Walk-in Freezer

- C** Back of Store Walk-in Cooler
 Back of Store Walk-in Freezer
 Rooftop Condensers
 Back Room Parallel Rack Systems



B

ARKTIC® · 59



B

FASCO®



C

ARKTIC® · 142

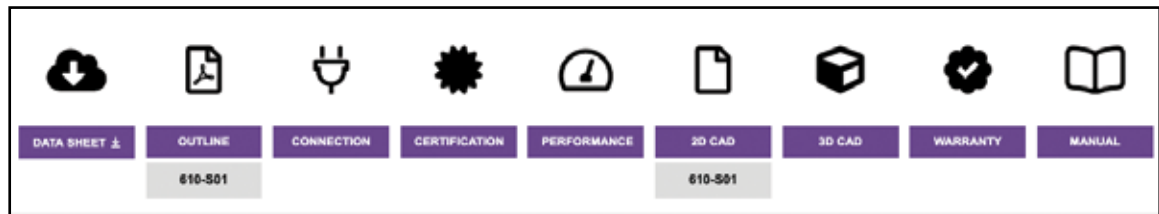
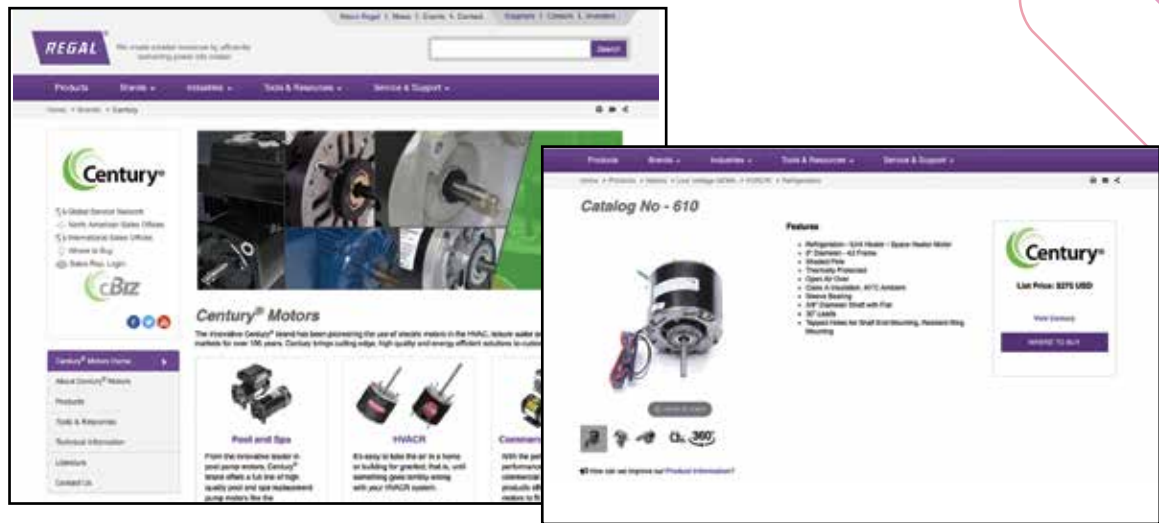
TABLE OF CONTENTS

Refrigeration Motors	Page No.	Page No.	
Fasco® C-Frame Motors	8-9	Elco Fan Blades and Adapter Bracket	20
Century® C-Frame Motors	10-11	Fasco Unit Bearing Motors	21-22
Fasco 3.3 Motors	12	Century Unit Bearing 15-75 Watt Motors	23-24
Fasco 3.3 Multi-horsepower Motors	13	Century ECM Motors	25
Genteq® Kryo™ Fortress Motors	14	Fasco 4.4 Diameter Motors	26
Genteq Kryo Fortress Fan Packs	15	Century 5" Diameter Stock Motors	27-28
Morrill Motors Kryo SSC Motors	16	Genteq Arctic 142 Motors	29
Morrill Motors® Arctic® SSC Unit Bearing Motors	17	OEM Replacements	30-43
Morrill Motors Arctic 59 Motors	18	Parts and Accessories	44-45
Elco® NU & ECM-IP ECM Motor Series	19	Motor Replacement Worksheet	46

TOUR THE NEW REGAL WEBSITE REGALBELOIT.COM

FEATURES:

- In-depth information on all Regal® brands and products.
- Robust product information details.
- View products based on solution and application within a specific industry.
- Access to dimensional drawings, CAD files, connection diagrams and more.
- Rotating 360° view of products.
- Competitive cross-reference tool.
- Motor search - customer can search by part, model, stock number, product family, industry, application, brand and more with engineering tools that are available.



ALPHANUMERIC INDEX

STOCK NUMBER	PAGE NUMBER
246	23,33,36
247	23
248	23
249	23
250	23,40,41
251	23
252	23
253	23
254	23,31,36,40,42
255	23
256	23,36,37,42
257	23
258	24,31,41
259	24
260	24,31,36,37,40,41
261	24
276	24,31,42
277	23,37,39
285	24,30
288	24,31
289	24,31
290	24,31
291	24,37
292	23
296	23
297	23,37
298	24
469	38
604	27
606	27
608	27
609	27
610	27
611	27
614	27
615	27
2117	44
2211	45
2212	45
2217	45
2218	45
2235	45
2267	45
2268	45
2271	44
2272	44
2274	44
3001	35
3012	35
3124	32

STOCK NUMBER	PAGE NUMBER
9200	24
9211	25,36
9218	25,33
9219	25,33
9220	32
9221	24,32
9222	24,32
9223	25,43
9666	27
9667	27
9668	27
9669	27
9721	13,34
700027	44
700046	44
700047	44
1010784-001	44
1221A	44
1231A	44
1254A	44
1302A	44
1304A	44
1305A	44
1306A	44
1307A	44
1483A	44
1487A	44
1488A	44
160A	35
174A	32,35
2087A	44
4VEA006	20
4VEA007	20
4VEA008	20
4VEA009	20
4VEA010	20
4VEA011	20
4VEA012	20
4VEA013	20
4VEA016	20
4VEP003	20
5100A	18
5101A	18
5104A	18
5110A	18
5111A	18
5200A	18
5201A	18
5204A	18
5210A	18

STOCK NUMBER	PAGE NUMBER
5211A	18
5FL1020-1	45
5FL1020-2	45
5FL1031-2	45
5FL727-1	45
5FL727-2	45
5FL824-1	45
5FL824-2	45
5FL832-1	45
5FL832-2	45
5FL926-1	45
5FL926-2	45
5FR1020-1	45
5FR1020-2	45
5FR1023	45
5FR1028	45
5FR1031-2	45
5FR721	45
5FR727-1	45
5FR727-2	45
5FR823	45
5FR824-1	45
5FR824-2	45
5FR832-1	45
5FR832-2	45
5FR925	45
5FR926-1	45
5FR926-2	45
5K001	18
5R002	29
5R004	29
5R005	29
5R007	29
5R016	17
5R017	17
5R018	17
5R019	17
5R020	17
5R021	17
5R022	17
5R023	17
5R024	17
5R025	17
5R026	17
5R027	17
5R028	17
5R029	16
5R030	16
5R031	16
5R033	16

ALPHANUMERIC INDEX

STOCK NUMBER	PAGE NUMBER
5R034	16
5R035	16
5R036	16
5R037	16
5R038	17
5R999	16
612A	27
613A	27
9207F2	25,30,31,33,39,41
9208F2	25,36,40,43
9209H	25,34
9209L	25,34
9210H	25,34
9210L	25,34
9217H	34
9217L	34
992A	34
C01316	10
C01322	11
C01323	10
C01326	11
C01329	11
C01330	11
C01335A	10
C01336	10
C01550	10
C01574	11
C01575	11
C01670	10
C01671	10
C01672	11
C01673	11
C01675	11
C01677	10
C01678	10
C01680	11
C01682	11
C01683	11
C01691	10,34
C01692	10,34
C01700	10
D0396	38
D1029	40
D1031	40
D1101	39
D1102	43
D1103	39
D1120	37
D1121	37
D1122	34

STOCK NUMBER	PAGE NUMBER
D1123	34
D1124	31
D1125	31
D1126	31
D1127	13
D1129	12,38
D1137	40
D1140	41
D1141	41
D1142	41
D1143	40
D1144	41
D1152	38
D1154	38
D1156	38
D1157	38
D1158	38
D1189	38
D417	12
D429	12
D437	12
D469	12
D470	12
D471	12
D472	12
D473	12
D475	12,42
D477	12
D480	26
D481	26
D482	26
D483	26
D484	26
D485	26
D671B	12
D672B	12
D915	41
D9487	42
EC16W115	19
EC16W230	19
EC34W115	19
EC34W230	19
EC4W115	19
EC4W230	19
EC5W115	19
EC5W230	19
EC6W115	19
EC6W230	19
EC9W115	19
EC9W230	19

STOCK NUMBER	PAGE NUMBER
EC-HE-0147	19,30
EC-HE-0176	19,35
EUBKT01	20
K100	9
K101	8
K102	8
K109	9
K110	9
K111	8
K112	9
K113	9
K114	8
K115	9
K120	8
K130	8
K1322	9
K1323	8
K141	9
K142	9
K143	9
K144	9
K145	8
K146	9
K147	9
K1550	8
K1574	8
K1575	8
K161	9
K1670	8
K1675	9
K1700	8
K610	9
K611	9
K612	9
K614	8
K628	8
K629	9
K670	8
K672	8
K673	8
K683	8
K-FAN4031	44
K-FAN4032	44
K-FAN6009	44
K-FAN6010	44
K-FAN6011	44
K-FAN6012	44
K-FAN6013	44
K-FAN6046	44
K-NUT6002	44

ALPHANUMERIC INDEX

STOCK NUMBER	PAGE NUMBER
MD5411	14
MD5411S	14
MD5469	15
MD5470	15
MD5471	15
MD5472	15
OCP0108	32
OCP0250	32
OCP0251	32
OCP1024	32
OHR1106	35
OHS1004	35
OHS10206	36
OHS9983	36
OKT1026	38
OKT3035	39
OKT3041	39
OTC1862	42
OTC1864	42
OTC6001	42
OTC6004	42
OTY1024	43
RF4400	28
RF4401	28
RF6402	28
RF6403	28
UB550	21
UB551	21
UB552	21
UB553	21
UB554	21
UB555	21
UB556	21
UB557	21
UB558	21
UB559	21
UB560	21
UB562	21
UB563	21
UB564	21
UB565	21
UB566	22
UB567	22
UB568	22
UB569	22
UB570	22
UB571	22
UB572	22
UB573	22
UB574	22

STOCK NUMBER	PAGE NUMBER
UB575	22
UB576	22
UB577	22
UB578	22
UB579	22
UB580	22
UB581	22
UB582	21
UB583	21
UB584	22
UB585	22
UB586	22
UB587	22
UB588	22
UB589	22
UB590	22
UB591	22
UB592	22,35
UB594	22
UB595	22
UB596	22
UB597	22
UB598	22
UB599	22
UB600	22

FASCO® C-FRAME MOTORS

K-LINE SHADED POLE

APPLICATIONS:

C-Frame motors are widely used in vent fans, wall heaters, range hoods, refrigeration fans, ductless range hoods and ice makers.

FEATURES:

- 115 and 230 VAC models
- Thermally protected
- Sleeve bearing
- UL recognized
- CA certified CSA

BENEFITS:

- Drop-in replacements for existing C-frame, K-Line series
- Wide range of application compatibility

STOCK NUMBER	HP	VOLTS	RPM	SPD	AMPS	ROT	BRNG	SHAFT DIM	STACK (IN)	FIG	NOTES
K114	1/500	120	1100	1	.74	CW	SLV	.1811 X 1.75	0.5	A	6
K102	1/500	120	1100	1	0.57	CW	SLV	.1811 X 1.50	0.5	A	2,6
K120	1/260	120	3000	2	0.50-0.29	CW	SLV	.2178 X 1.55	0.5	B	3,6
▲ K145	1/250	115	3000	1	.53	CW	SLV	.1814 X 1.00	0.5	C	6
K1574 New	1/240	120	3000	1	.43	CWSE	SLV	.181 X .98	.500	D	1,45
K628	1/200	208/230	3000	1	.25	CW	SLV	.2500 X 1.60	0.75	E	1
K1700 New	1/160	120	3000	1	.36	CWSE	SLV	.187 X 1.67	.625	F	1,45
K614	1/150	120	3000	1	.59	CW	SLV	.2178 X 1.65	0.5	G	6
K1670 New	1/150	120	3000	1	.34	CCWSE	SLV	.187 X 1.45	.625	H	1,45
▲ K673	1/150	120	3000	2	.61/.33	CW	SLV	.1875 X 1.30	0.62	I	1,3
K670	1/150	120	3000	1	.61	CCW	SLV	.1875 X 1.30	0.62	I	1
K1550 New	1/150	120	3000	1	.92	CCWSE	SLV	.181 X 3.27	.500	J	1,45
K130	1/150	115	3000	1	.47	C	SLV	.1811 x 1.00	0.62	C	2,6
K101	1/150	240	1260	1	.52	CCW	SLV	.2178 x 1.34	1.12	K	6
K672	1/150	240	3000	1	.29	CCW	SLV	.1875 x 1.30	0.62	I	1
K1323 New	1/130	120	3000	1	.46	CWSE	SLV	.187 X 2.45	.625	L	1,45
K111	1/120	120	3000	1	.82	CCW	SLV	.2178 x 1.97	0.5	M	6
K1575 New	1/120	120	3000	1	.46	CCWSE	SLV	.147 X 1.49	.625	N	1,45
K683	1/100	240	3000	1	.30	CW	SLV	.1875 x 1.30	1	O	6

NOTES	DESCRIPTION
▲	Item to be discontinued when stock is depleted.
1	Packed 1 per carton.
2	Use fan blades with round hub I.D.
3	Two-speed motor.
6	Packed 6 per carton.
45	Replacing Century® C-frame motor

Stock numbers in bold are recommended stock items.

FIG A



FIG B



FIG C



FIG D



FIG E



FIG F



FIG G



FIG H



FIG I



FIG J



FIG K



FIG L



FIG M



FIG N



FIG O



FASCO® C-FRAME MOTORS

K-LINE SHADED POLE

APPLICATIONS:

C-frame motors are widely used in vent fans, wall heaters, range hoods, refrigeration fans, ductless range hoods and ice makers.

FEATURES:

- 115 and 230 VAC models
- Thermally protected
- Sleeve bearing
- UL recognized
- CA certified CSA

BENEFITS:

- Drop-in replacements for existing C-frame, K-Line series
- Wide range of application compatibility

FASCO MODELS	HP	VOLTS	RPM	SPD	AMPS	ROT	BRNG	SHAFT DIM	STACK (IN)	FIG	NOTES
K100	1/100	120	2750	1	.73	CW	SLV	.1811 x 1.05	0.62	A	2,6
K611	1/100	120	3000	1	.63	CCW	SLV	.2500 x 2.45	0.75	B	6
K115	1/100	115	3000	1	.57	CCW	SLV	.2178 x 1.85	0.75	C	6
K629	1/85	120	2950	1	.55	CW	SLV	.2500 x 1.13	1	D	1
K109	1/75	115	3000	1	.77	CCW	SLV	.2178 x 2.37	0.75	E	6
K110	1/75	115	3000	1	0.77	CCW	SLV	.2178 x 2.44	0.75	E	4,6
K113	1/70	120	3000	1	.90	CCW	SLV	.2178 x 1.19	0.75	F	6
▲ K141	1/70	120	3000	1	.65	CW	SLV	1.0 x .1814 x 1.75	1.15	G	5,6
K142	1/70	120	3000	1	.63	CW	SLV	.1814 x 1.00	1	H	6
▲ K143	1/70	220-240	3000	1	.32	CW	SLV	.1814 x 1.00	1	H	6
K612	1/65	120	3000	1	.73	CW	SLV	.2500 x 2.70	1	I	6
K610	1/60	120	3000	1	0.75-0.63	CCW	SLV	.2178 x 1.33	1	J	3,6
K1675 New	1/60	120/240	2500/3000	2	.72/.58/.36/.29	CWSE	SLV	.187 X 2.08	1.00	K	1,45
K112	1/50	120	3000	2	.86/.44	CW	SLV	.2178 x 1.44	1	L	3,6
K161	1/50	120	3000	2	.90	CCW	SLV	.2178 x 1.21	1	M	6
K144	1/40	120	3000	1	1.0	CCW	SLV	.2178 x 1.50	1	N	6
▲ K147	1/30	220-240	3000	1	.69	CW	SLV	.2499 x 1.00	1.5	O	6
K674	1/22	115	3000	1	1.9	CW	BALL	.3116 X .291 X 1.93	1.5	P	1
K1322 New	1/40	115	3000	1	.98	CWSE	BALL	.212 X 2.00	1.50	Q	1,45
K146	1/20	120	3000	1	2.1	CW	SLV	.2499 x 1.50	1.5	R	6

NOTES	DESCRIPTION
▲	Item to be discontinued when stock is depleted.
1	Packed 1 per carton.
2	Use fan blades with round hub I.D.
3	Two-Speed motor.

4	Maximum flat length.
5	Double shaft.
6	Packed 6 per carton.
45	Replacing Century® C-frame motor.

Stock numbers in bold are recommended stock items.



CENTURY® C-FRAME MOTORS

DIRECT REPLACEMENT MOTORS

APPLICATIONS:

Used on commercial and domestic refrigeration applications, also in exhaust fans, range hoods, heaters, ventilators, evaporators and many other air moving applications.

FEATURES:

- CSA certified
- Mounting hardware
- Single and two speed
- Shaded pole
- UL recognized

BENEFITS:

- Designed to replace many "C" frame motors.

CENTURY® STOCK NUMBER	STACK SIZE	RPM	SPD	VOLTS	AMPS	ROT ^o	SHAFT DIA & LENGTH	FASCO® MOTOR REPLACEMENT	CROSS REFERENCE	FIG	NOTES
▲ C01334	1/2	3000	1	120	0.30	REV	.187 X 1.66		Gem* EM334, For Admiral*	E	60
▲ C01336	1/2	3000	1	120	0.20	REV	.125 X 1.30	No Repl	Gem EM336, For Gibson*/Frigidaire*	C	59
▲ C01678	1/2	3000	1	120	0.42	REV	.187 X 1.50	No Repl	Gem EM678, Robert Shaw* 14015	B	61
▲ C01550	1/2	3000	1	120	0.89	REV	.217 X 1.75	K1550 New	Gem EM550 Robert Shaw VFM-100 Supco* SM-550	H	63
▲ C01316	5/8	3000	1	115	0.51	REV	.187 X 1.00	No Repl		B	61,62
▲ C01691	5/8	3000	1	120	0.80	REV	.181 X 1.8	No Repl	Stand offs 5036F & 5018S, Bohn* 5007S, Gem EM691, Uppco* 85	G	
▲ C01692	5/8	3000	1	240	0.32	REV	.18 X 1.8	No Repl	Stand offs 5036G & 5018T, Bohn 5007T, Gem EM692, Uppco 86	G	
▲ C01323	5/8	2750	1	115	0.47	REV	.217 X 2.37	K1323 New		D	
▲ C01335A	5/8	3000	1	115	0.40	REV	.187 X 1.67		Gem EM335, For Admiral	F	60
▲ C01375	5/8	3000	1	120	0.60	REV	.181 X 1.50			B	56,61
▲ C01670	5/8	3000	1	120	0.40	REV	.187 X 1.42	K1670 New	Gem EM670, Robert Shaw 14001, Acme* 600/700/710	A	61,58
▲ C01700	5/8	3000	1	120	0.45	REV	.187 X 1.63	K1700 New	Acme 700	E	58,61
C01677	5/8	3000	1	120	0.30	REV	.187 X 1.28	No Repl	Gem EM677, Robert Shaw 14013	B	
▲ C01671	5/8	3000	1	120	0.40	REV	.187 X 1.42	No Repl	Gem EM671, Robert Shaw 14003	B	61

^oTo reverse the rotation of a C-frame motor, remove the shaft from one side of the stack and re-install it back on the opposite side of the stack.

NOTES	DESCRIPTION
▲	Item to be discontinued when stock is depleted.
56	Includes lead and plug assembly.
58	Mounting hardware & fan kit included.
59	Molex plug.
60	Spade connector.
61	Mechanically reversible.
62	Shaft has no flat.
63	Includes fan blade.

FIG A



FIG B



FIG C



FIG D



FIG E



FIG F



FIG G



FIG H



*All the OEM trade names and trademarks listed on this page are not owned or controlled by Regal Beloit Corporation. The rights associated with those trade names and trademarks remain the property of their respective owners or licensees.

CENTURY® C-FRAME MOTORS

DIRECT REPLACEMENT MOTORS

APPLICATIONS:

Used on commercial and domestic refrigeration applications, also in exhaust fans, range hoods, heaters, ventilators, evaporators and many other air moving applications.

FEATURES:

- CSA certified
- Mounting hardware
- Single and two speed
- Shaded pole
- UL recognized

BENEFITS:

- Designed to replace many "C" frame motors.

CENTURY® STOCK NUMBER	STACK SIZE	RPM	SPD	VOLTS	AMPS	ROT ^o	SHAFT DIA & LENGTH	FASCO® MOTOR REPLACEMENT	CROSS REFERENCE	FIG	NOTES
▲ C01673	5/8	3000/1550	2	120	0.71/0.34	REV	.187 X 1.33	No Repl	Gem* 673, Robert Shaw *14007	A	58,61
▲ C01672	5/8	3000	1	240	0.25	REV	.187 X 1.48	No Repl	Gem 672, Robert Shaw 14005, Acme* 602/702	A	11,58,61
▲ C01330	3/4	3000	1	120	0.90	REV	.217 X 2.37	K110 New		B	56,57,61
▲ C01326	7/8	3000	1	120	1.05	REV	.217 X 1.24	No Repl		B	
▲ C01682	1	3000/1550	2	120	0.73/0.36	REV	.187 X 1.29	No Repl	Gem EM682, Robert Shaw 14023	B	61
▲ C01675	1	3000	1	120/240	1.0/0.50	REV	.187 X 2.07	K1675 New	Gem EM675, Acme 7502	A	61
▲ C01683	1	3000	1	240	0.30	REV	.187 x 1.15	K683 New	Gem EM683, Robert Shaw 14025	B	61
▲ C01680	1 1/8	3000	1	120	0.70	REV	.187 x 1.46	No Repl	Gem EM680, Robert Shaw 14019, Acme 750	B	61
▲ C01329	1 1/8	3000	1	240	0.60	REV	.217 X 1.24	No Repl		C	
▲ C01322	1 1/5	3000	1	115	1.00	REV	.250 X 2.00	K1322 New		B	25,57,61
▲ C01575	5/8	3000	1	120	0.60	REV	.187 X .875	K1575 New		D	

^oTo reverse the rotation of the motor, remove the shaft from one side of the stack and re-install it back on the opposite side of the stack.

FIREPLACE FAN

FEATURES:

- Mounting Brackets fit 5.83 B.C.D
- Universal fireplace fan replacement
- 100CFM

CENTURY® STOCK NUMBER	STACK SIZE	RPM	SPD	VOLTS	AMPS	ROT	SHAFT DIA & LENGTH	FASCO® MOTOR REPLACEMENT	CROSS REFERENCE	FIG	NOTES
▲ C01574	1/2	3000	1	120	0.46	CWSE	.181 x .947	K1574 New	Rotom* RF100, J574	E	

NOTES	DESCRIPTION
▲	Item to be discontinued when stock is depleted.
11	60/50 Hertz.
25	Ball bearing.
56	Includes lead and plug assembly.
57	Thermally protected.
58	Mounting hardware & fan kit included.
61	Mechanically reversible.

FIG A



FIG B



FIG C



FIG D



FIG E



*All the OEM trade names and trademarks listed on this page are not owned or controlled by Regal Beloit Corporation. The rights associated with those trade names and trademarks remain the property of their respective owners or licensees.

FASCO® 3.3 DIAMETER GE®* 11 FRAME REPLACEMENTS

REFRIGERATION FAN MOTORS

APPLICATIONS:

Designed primarily for their use in evaporators of commercial refrigeration walk-in coolers and freezers.

FEATURES:

- 115/208-230 and 460 VAC models
- Thermally protected
- 3.9 Diameter
- 1/2" Studs for mounting
- 1 Speed
- Extended hubs with rubber rings for base mount
- Interchangeable with GE®* 11 frame refrigeration motors

BENEFITS:

- Drop-in replacements for existing refrigeration fan motors
- Wide range of application compatibility

STOCK NUMBER	TYPE	HP/WATT	VOLTS	RPM	AMPS	ENCLOSURE	ROT	BRNG	SHAFT DIM	BODY LENGTH	FIG	NOTES
D429	SP	9Watts	115	1550	0.6	Totally Encl.	CCW	SLV	HUB	2 1/8	G	46,47,48,49
D437	SP	16Watts	115	1550	1.1	Totally Encl.	CCW	SLV	HUB	2 7/8	G	46,47,48,49
▲ D477	SP	1/35	208-230	1550	0.75	Open Vent	CCW	SLV	5/16 x 1 5/8	4 1/4	C	9,10
▲ D471	SP	1/20	208-230	1550	1.1	Open Vent	CCW	SLV	5/16 X 2 1/2	4 1/4	C	9,10
D417	SP	1/20	208-230	1550	1.1	Open Vent	CCW	Ball	5/16 X 2 1/2	4 1/4	D	9,10
D470	SP	1/20	208-230	1550	0.94	Open Vent	CW	SLV	5/16 X 2 5/8	4 1/4	C	9,10
D472	SP	1/20	115	1550	1.9	Open Vent	CCW	SLV	5/16 X 2 5/8	4 1/4	C	9,10
D473	SP	1/20	115	1550	2	Open Vent	CCW	SLV	5/16 X 2 5/8	4 1/4	C	9,10
■ D1129	PSC	1/20	115/230	1550	0.7/.35	Totally Encl.	CW	Ball	5/16 X 1 5/8	3 1/8	E	51
■ D475	SP	1/15	460	1550	0.5	Open Vent	CCW	SLV	5/16 X 2 1/2	4 1/3	F	8,9,10
D469	SP	1/12	208-230	1550	1.3	Open Vent	CCW	SLV	5/16 X 2 1/8	4 1/2	H	9,10
D671B	SP	1/15	115/208-230	1550	1.90/0.84-0.94	OAO	CCWSE	Ball	5/16 X 2 1/2	4 1/2	A	
D672B	SP	1/15	115/208-230	1550	1.90/0.84-0.94	OAO	CWSE	Ball	5/16 X 2 1/2	4 1/2	B	

NOTES	DESCRIPTION
▲	Item to be discontinued when stock is depleted.
■	OEM replacement, see pages 30-43.
8	Does not have extended hubs or rubber rings for base mount.
9	3.9 diameter.
10	Includes 1/2" studs for mounting.
46	Mounting bracket designed to match the original motor (four 8-36 drilled & tapped holes).
47	Mounting hardware included.
48	Has 22" leads with 1/16" thick insulation.
49	Three studs opposite shaft end are 8-32 on a standard 2.84" bolt circle 120 apart.
51	4 MFD 370 V capacitor.

FIG A



FIG B



FIG C



FIG D



FIG E



FIG F



FIG G



FIG H



*GE is believed to be a trademark or trade name of General Electric Company and is not owned or controlled by Regal Beloit Corporation.

FASCO® 3.3 MULTI-HORSEPOWER REPLACEMENT MOTORS

3 DIFFERENT HORSEPOWERS INTO ONE MOTOR

APPLICATIONS:

Replaces 1/12, 1/15, 1/20 horsepower PSC and low efficient shaded pole designs.

FEATURES:

- Easy-to-Read connection diagram attached to white lead wire
- Four studs on each end
- 40°C Ambient
- Class B Insulation
- UL and CSA Recognized
- Low temp (-40°F) lubrication system
- Reversing plug for easy rotation change
- Thermally protected
- Open ventilated
- Ball or sleeve bearing

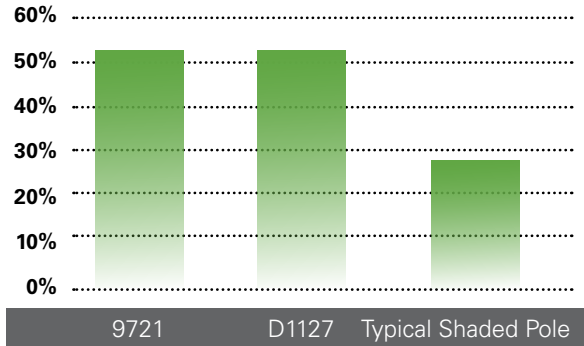
BENEFITS:

- Use of a permanent split capacitor design allows the motor to deliver more power with a lower amp draw
- Cooler operation results in fewer failures

**ENERGY
SAVINGS
PSC DESIGN**



**50% MORE EFFICIENT
THAN SHADED POLE MOTORS**



\$ Less efficient shaded pole motors are often used in original equipment to reduce cost. While they do allow for small savings at time of purchase, durable savings quickly dissolve in electric bills due to today's high power costs.

STOCK NUMBER	HP	RPM	SPD	VOLTS	AMPS	ROT	BRG	HZ	BODY LENGTH	SHAFT DIM	FIG	NOTES
■ 9721 (3-IN-1®)	1/12, 1/15, 1/20	1550	1	115/208-230	1.1/0.5	REV	Ball	60/50	3 1/2	5/16 x 3	A	32
D1127	1/12, 1/15, 1/20	1550	1	115/230	1.1/0.6	REV	SLV	60	3 1/2	5/16 x 3	B	32

NOTES	DESCRIPTION
■	OEM replacement, see pages 30-43.
32	Energy Efficient.

Stock numbers in bold are recommended stock items.

FIG A



FIG B



GENTEQ® KRYO™ FORTRESS MOTORS

BUILT TO BE YOUR TRUCK STOCK MOTOR

APPLICATIONS:

The versatility and performance of the Kryo Fortress motor make it an ideal retrofit or replacement motor for OEM's. It can be used on other ECM or shaded pole unit bearing motors in commercial refrigeration evaporator and condenser units.

FEATURES and BENEFITS:

- **Two motors replace all motors rated:**
 - › 4-27 or 4-20 watts (automatically operates at the watts needed by load)
 - › 1550 RPM
 - › 115-230 VAC (automatic) Allowable voltage range 90-240 VAC
 - › CW & CCW (one wire connection)
 - › Standard 1/4-20 shaft thread
- **Multiple standard mounting options**
 - › Standard rear 3-hole and 4-hole mounting
 - › Two-sided mounting feet

BUILT TO BE EASY TO INSTALL

- Standard two-pin molded plug
- Reverse rotation with one wire connection
- Multiple standard mounting options

BUILT TO SAVE ENERGY

- High efficiency ECM motors provide 41% greater efficiency over traditional shaded pole motors

BUILT TO LAST

- IP66 and IP67 rating (water-tight, dust-tight and submersible)
- Long-life ball bearings
- Aluminum body
- Can operate in temperatures between -40°C and 55°C

STOCK NUMBER	WATTS	RPM	SPD	VOLTS	AMPS	ROTATION	BEARING	ENCLOSURE	SHAFT	BODY LENGTH	CROSS REFERENCE*
MD5411	4-27	1550	1	90-240	.65-.30	REV	Ball	IP66/IP67	1/4-20	3.61	10891 EC5411E EC5412E EC5414E
MD5411S	4-20	1550	1	90-240	.55-.20	REV	Ball	IP66/IP67	1/4-20	3.11	10891 EC5411E EC5412E EC5414E

NOTES	DESCRIPTION
*	Verify that the motor output, watts and RPM are suitable for the motor to be replaced.
Stock numbers in bold are recommended stock items.	

Stock No. 2117 - 90° cord adapter available separately.



REPLACES 28 DIFFERENT MOTOR RATINGS

GENTEQ® KRYO™ FORTRESS FAN PACKS

BUILT TO BE EASY TO INSTALL

APPLICATIONS:

The versatility and performance of the Kryo Fortress fan pack make it an ideal retrofit or replacement fan pack for OEM's. It can be used on other ECM or shaded pole fan packs in commercial refrigeration evaporator and condenser units.

FEATURES and BENEFITS:

BUILT TO BE EASY TO INSTALL

- Standard two-pin molded plug (operates motor at 4-20 watts, 1550 RPM, CW rotation)
- 115-230 VAC (automatic)
Allowable voltage range 90-240 VAC

BUILT TO SAVE ENERGY

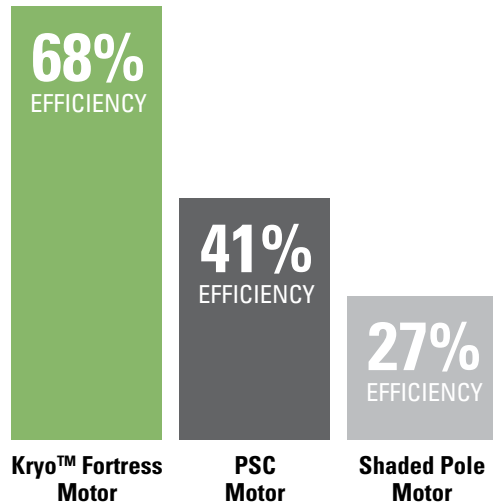
- High efficiency ECM motors provide 41% greater efficiency over traditional shaded pole motors

BUILT TO LAST

- IP66 and IP67 rating (water-tight, dust-tight and submersible)
- Long-life ball bearings
- Aluminum body
- Can operate in temperatures between -40°C and 55°C

ENERGY SAVINGS ECM DESIGN

Comparison 16 Watt Motors @ 1550 RPM



STOCK NUMBER	CFM	WATTS	RPM	SPD	VOLTS	AMPS	ROT (OSE)	BEARING	ENC	MOUNTING B.C.	CROSS REFERENCE*	FIG	NOTES
MD5469	355	4-20	1550	1	90-240	.55-.20	CW	Ball	IP66/IP67	9.532	5R024, 5R033	A	15, 17
MD5470	355	4-20	1550	1	90-240	.55-.20	CW	Ball	IP66/IP67	9.800	5R026, 5R035, 5470 EC5470FP	B	14, 17
MD5471	390	4-20	1450	1	90-240	.55-.20	CW	Ball	IP66/IP67	9.800	5R027, 5R036, 05471	B	14, 17
MD5472	415	4-20	1550	1	90-240	.55-.20	CW	Ball	IP66/IP67	9.800	5R028, 5R037, 05472, EC5472FP	B	14, 17

NOTES	DESCRIPTION
14	Straight 2 pin plug.
15	Right angle 2 pin plug.
17	Fan pack assembly.
*	Verify that the motor output, watts and RPM are suitable for the motor to be replaced.
Stock numbers in bold are recommended stock items.	

FIG A



FIG B



DUAL VOLTAGE, DROP-IN REPLACEMENT

MORRILL MOTORS® KRYO™ SSC MOTORS

APPLICATIONS:

Kryo SSC motors are the next generation ECM motors with multi-watt range capability. Designed for use in commercial refrigeration, they can be used in other applications requiring efficiency and reliability. They are also available with mounting brackets, fan blades, and fan assembly hardware. They are approved for use in applications where flammable refrigerants are present and can be used with applications where the use of pressurized water for wash down is a standard procedure.

FEATURES:

- Energy efficient ECM technology
 - › Automatic torque variation
- IP65 environmental certification
- ATEX certified to EN60079

BENEFITS:

- Low power consumption for maximum operational efficiency
- Constant rotational speed for functional consistency
- Dust tight and water-resistant against water projected from a nozzle but not waterproof.
- Can be used in applications with flammable refrigerants

STOCK NUMBER	MOTOR DIA	WATTS	RPM	SPD	VOLTS	AMPS	ROT (OSE)	BEARING	ENCLOSURE	SHAFT DIAMETER LENGTH	FIG	NOTES
▲ 5R029	3.3	12	1550	1	115	0.30	CW	Ball	Totally Encl.	1/4 x 20 Thread	A	14, 20
5R034	3.3	12	1550	1	115	0.30	CW	Ball	Totally Encl.	1/4 x 20 Thread	A	15, 20
5R030	3.3	16	1550	1	230	0.15	CW	Ball	Totally Encl.	1/4 x 20 Thread	A	14, 20
5R031	3.3	16	1550	1	115	0.40	CW	Ball	Totally Encl.	1/4 x 20 Thread	A	14, 20
5R999	3.3	4-25	1550	1	115	0.60	CW	Ball	Totally Encl.	1/4 x 20 Thread	A	14, 20
FAN PACK ASSEMBLY												
5R033	3.3	12	1550	1	115	0.30	CW	Ball	Totally Encl.	1/4 x 20 Thread	B	14, 17, 20
5R035	3.3	12	1550	1	115	0.30	CW	Ball	Totally Encl.	1/4 x 20 Thread	B	15, 17, 20
5R036	3.3	16	1450	1	115	0.40	CW	Ball	Totally Encl.	1/4 x 20 Thread	B	14, 17, 20
▲ 5R037	3.3	16	1550	1	115	0.40	CW	Ball	Totally Encl.	1/4 x 20 Thread	B	14, 17, 20

NOTES	DESCRIPTION
▲	Item to be discontinued when stock is depleted.
14	Straight, 2 pin molded plug.
15	Right angle, 2 pin molded plug.
17	Fan pack assembly.
20	IP65 Certified.

FIG A



FIG B



MORRILL MOTORS® ARKTIC® SSC UNIT BEARING MOTORS

APPLICATIONS:

Arctic SSC unit bearing motors are used in evaporators and condensers of commercial refrigerators and can be used in other applications demanding high efficiency. Utilizing ECM technology with peak efficiencies reaching up to 66%, Arctic SSC motors are designed for 83,720 hours of continuous operation. All ratings are UL certified (E258064).

FEATURES:

- Energy efficient ECM technology
 - › Automatic torque variation
- Mounting:
 - › (5) 5/32" diameter cored holes on rear (aluminum)
 - › (3) #8-36 drilled through and tapped (cast iron)
- Temp Ranges:
 - › Operating temp: -40°C to +55°C ambient
 - › Storage temp: -40°C to +80°C ambient

BENEFITS:

- Low power consumption for maximum operational efficiency
- Constant rotational speed for functional consistency
- Wide array of application compatibility
- Drop-in replacement for existing shaded pole and PSC evaporator cooler motors

STOCK NUMBER	MOTOR DIA	WATTS	RPM	SPD	VOLTS	AMPS	ROT (OSE)	BEARING	ENCLOSURE	SHAFT DIAMETER LENGTH	BODY LENGTH	FIG	NOTES
5R016	3.3	12	1550	1	115	0.30	CW	Unit	Totally Encl.	1/4 x 20 Thread	2 1/2	A	14
5R025	3.3	12	1550	1	115	0.30	CW	Unit	Totally Encl.	1/4 x 20 Thread	2 1/2	B	15
5R038	3.3	12	1550	1	115	0.30	CW	Unit	Totally Encl.	1/4 x 20 Thread	2 1/2	C	14, 18
5R020	3.3	16	1550	1	115	0.40	CW	Unit	Totally Encl.	1/4 x 20 Thread	2 1/2	A	14
▲ 5R019	3.3	16	1550	1	230	0.15	CW	Unit	Totally Encl.	1/4 x 20 Thread	2 1/2	A	14
5R021	3.3	25	1550	1	115	0.60	CW	Unit	Totally Encl.	1/4 x 20 Thread	2 1/2	A	14
5R017	3.3	38	1550	1	115	0.90	CCW	Unit	Totally Encl.	1/4 x 20 Thread	2 1/2	D	19
5R018	3.3	38	1550	1	230	0.45	CW	Unit	Totally Encl.	1/4 x 20 Thread	2 1/2	D	19
5R022	3.3	38	1550	1	115	0.90	CCW	Unit	Totally Encl.	1/4 x 20 Thread	2 1/2	E	14, 16
5R023	3.3	38	1550	1	230	0.45	CCW	Unit	Totally Encl.	1/4 x 20 Thread	2 1/2	E	14, 16
MOTOR & FAN PACK ASSEMBLY													
5R024	3.3	12	1550	1	115	0.30	CW	Unit	Totally Encl.	1/4 x 20 Thread	2 1/2	F	15, 17
5R026	3.3	12	1550	1	115	0.30	CW	Unit	Totally Encl.	1/4 x 20 Thread	2 1/2	G	14, 17
5R027	3.3	16	1450	1	115	0.40	CW	Unit	Totally Encl.	1/4 x 20 Thread	2 1/2	G	14, 17
5R028	3.3	16	1550	1	115	0.40	CW	Unit	Totally Encl.	1/4 x 20 Thread	2 1/2	G	14, 17

NOTES	DESCRIPTION
▲	Item to be discontinued when stock is depleted.
14	Straight, 2 pin molded plug.
15	Right angle, 2 pin molded plug.
16	Includes bracket.
17	Fan pack assembly.
18	No mounting feet.
19	Dual flag connections.



FIG D



FIG E



FIG F



FIG G



MORRILL MOTORS® ARKTIC® 59 MOTORS

APPLICATIONS:

Arctic 59 motors are used in the evaporators of commercial walk-in coolers and freezers. With peak efficiencies of approximately 66%, they can be used in any air moving application that demands high efficiency and dependability. All ratings have UL certification (E258064) and are designed for a useful life of 83,720 hours.

FEATURES:

- Energy efficient ECM technology
 - › Automatic torque variation
- Mounting: Standard 1/2" - #10-32 studs on shaft end
 - › (2-13/16" bolt circle) and 1/2" - #10-32 studs on both ends
 - › Power cord with standard straight two-pin molded plug
- Shaft: 5/16" single shaft with single flat is standard.
- Temp Ranges:
 - › Operating temp: -40°C to +25°C ambient
 - › Storage temp: -40°C to +80°C ambient

BENEFITS:

- Low power consumption for maximum efficiency
- Constant rotational speed for functional consistency
- Wide array of application compatibility
- Drop-in replacement for existing shaded pole and PSC evaporator cooler motors

STOCK NUMBER	MOTOR DIA	HP	RPM	SPD	VOLTS	AMPS	ROT (OSE)	BRNG	ENCLOSURE	SHAFT DIA LENGTH	BODY LENGTH	CROSS REFERENCE	FIG	NOTES
5K001	NA	NA	NA	NA	NA	NA	NA	NA	NA	NA	NA	NA	A	21
5100A	3.3	1/15	1550	1	115	1.1	CW	Ball	Totally Encl.	5/16 X 2 5/8	3 5/16	5100, 5103, 5105	B	
5101A	3.3	1/15	1550	1	115	1.1	CCW	Ball	Totally Encl.	5/16 X 2 5/8	3 5/16	5101, 5102, 5106	B	
5104A	3.3	1/15	1550	1	115	1.1	CCW	Ball	Totally Encl.	5/16 x 1	3 5/16	5104	C	
5110A	3.3	1/15	1550/800	2	115	1.1	CCW	Ball	Totally Encl.	5/16 X 2 5/8	3 5/16	5110, 5120	B	
5111A	3.3	1/15	1550/800	2	115	1.1	CW	Ball	Totally Encl.	5/16 X 2 5/8	3 5/16	5111, 5121	B	
5200A	3.3	1/15	1550	1	208-230	0.63	CW	Ball	Totally Encl.	5/16 X 2 5/8	3 5/16	5200, 5203	B	
5201A	3.3	1/15	1550	1	208-230	0.63	CCW	Ball	Totally Encl.	5/16 X 2 5/8	3 5/16	5201, 5202, 5206	B	
5204A	3.3	1/15	1550	1	208-230	0.63	CCW	Ball	Totally Encl.	5/16 x 1	3 5/16	5204	C	
5210A	3.3	1/15	1550/800	2	208-230	0.63	CCW	Ball	Totally Encl.	5/16 X 2 5/8	3 5/16	5210, 5220	B	
5211A	3.3	1/15	1550/800	2	208-230	0.63	CW	Ball	Totally Encl.	5/16 X 2 5/8	3 5/16	5211, 5221	B	

NOTES	DESCRIPTION
21	Mounting bracket (part # 24X328011G1).
Stock numbers in bold are recommended stock items.	

FIG A



FIG B



FIG C



APPLICATIONS: NU SERIES

NU Series Shaded Pole Motors are widely used in industrial and commercial refrigeration for condensing and evaporating units. Also used in freezers, bottle, food and beverage coolers, walk-in and reach-in coolers and ventilating units. They are suitable for all angle operation and offer multiple mounting features.

FEATURES: NU SERIES

- Type: AC / shaded pole / 4 pole / single-speed
- Range: From 4 to 34 watt output
- Enclosure: Totally enclosed
- Bearings: Self-lubricating and self-aligning long life Sintec sleeve bearings
- Duty: Continuous air over
- Insulation/Protection: Class B. Impedance and thermally protected
- Operating range: Standard operating temperatures: -40°F to 104°F
- Approvals: cURus and CE
- Rear mounting: 3 tapped holes on 2.835" B.C. at 120° or 4 mounting screws on shaft end
- Foot mounting: Single side boss with 4 tapped holes
- Rotation: CCWSE

APPLICATIONS: ECM-IP ECM SERIES

ECM-IP ECM series motors are the company's second generation of high-efficiency electronically commutated motors. These new motors offer efficiency rates up to 70% which is 4-5 times more efficient than the traditional shaded pole fan motor.

FEATURES: ECM-IP ECM SERIES

- Moisture protection: IP65 moisture protection
- Operation: All angle, continuous air over
- Rotation: CCW from shaft end
- Cord terminals: 3 pin & 2 pin, 90°
- Front mounting: 4 studs on 3.72" B.C.
- Drop-in replacement for front mount motors

BENEFITS

- Drop-in replacement for existing square motor shaded pole motors
- Mechanically reversible
- Wide range of application compatibility
- Low power consumption with ECM-IP series

STOCK NUMBER	MOTOR DIA	WATTS	RPM	SPD	VOLTS	AMPS	ROT (SE)	BRNG	ENCLOSURE	SHAFT DIA LENGTH	BODY LENGTH	FIG	NOTES
EC4W115	3.3	4	1550	1	115	0.36	CCW	SLV	Totally Encl.	Hub	2 13/16	A	
▲ EC4W230	3.3	4	1550	1	230	0.18	CCW	SLV	Totally Encl.	Hub	2 13/16	A	
EC5W115	3.3	5	1550	1	115	0.40	CCW	Ball	Totally Encl.	Hub	2 13/16	A	
▲ EC5W230	3.3	5	1550	1	230	0.20	CCW	SLV	Totally Encl.	Hub	2 13/16	A	
EC6W115	3.3	6	1550	1	115	0.41	CCW	SLV	Totally Encl.	Hub	3 1/16	A	
▲ EC6W230	3.3	6	1550	1	230	0.20	CCW	SLV	Totally Encl.	Hub	3 1/16	A	
EC9W115	3.3	9	1550	1	115	0.58	CCW	SLV	Totally Encl.	Hub	3 1/16	A	
EC9W230	3.3	9	1550	1	230	0.35	CCW	SLV	Totally Encl.	Hub	3 1/16	A	
EC16W115	3.3	16	1550	1	115	0.85	CCW	Ball	Totally Encl.	Hub	3 5/8	A	
EC16W230	3.3	16	1550	1	230	0.50	CCW	Ball	Totally Encl.	Hub	3 5/8	A	
EC34W115	3.3	34	1550	1	115	1.60	CCW	SLV	Totally Encl.	Hub	4 3/16	A	
EC34W230	3.3	34	1550	1	230	0.80	CCW	SLV	Totally Encl.	Hub	4 3/16	A	
▲ ■ EC-HE-0147	3.3	12	1450	1	115	0.18	CCW	Ball	Totally Encl.	Hub	3 5/8	B	
■ EC-HE-0176	3.3	15	1600	1	115	0.22	CCW	Ball	Totally Encl.	Hub	4	B	

NOTES	DESCRIPTION
▲	Item to be discontinued when stock is depleted.
■	OEM replacement, see pages 30-43.
Stock numbers in bold are recommended stock items.	

FIG A



NU SERIES

FIG B



ECM SERIES

ELCO® FAN BLADES & ADAPTER BRACKET

FAN BLADES

APPLICATIONS:

For use on Elco Motors ONLY

FEATURES:

- Plastic
- Temperature range -30°C + 60°C

ELCO® FAN BLADES					
STOCK NUMBER	DIA (IN)	PITCH (DEG)	NO OF BLADES	CW MOTOR AIRFLOW	MOTOR WATT
4VEA012	6	28	5	Suction	4 & 5
4VEA011	6.5	31	5	Suction	5
4VEA009	7.75	28	5	Suction	6 & 9
4VEP003	7.75	31	5	Pusher	10
4VEA010	7.75	34	5	Suction	6 & 9
4VEA016	8.75	31	5	Suction	10
4VEA013	9	25	5	Suction	9
4VEA006	9	31	5	Suction	16
4VEA008	10	22	5	Suction	16
4VEA007	10	28	5	Suction	16

FAN BLADE



ADAPTER BRACKET

APPLICATIONS:

To mount NU Series motors on "European Style" condenser brackets

STOCK NUMBER

EUBKT01

ADAPTER BRACKET



FASCO® UNIT BEARING SHADED POLE MOTORS - ALUMINUM

APPLICATIONS:

Unit bearing shaded pole motors are widely used in industrial and commercial refrigeration for condensing and evaporating units. Also used in freezers, bottle, food and beverage coolers, walk-in and reach-in coolers and ventilation units. They are suitable for all angle operation and offer multiple mounting features.

FEATURES:

- Type: 3.3" AC / shaded pole / 4 pole / single speed
- Range: From 2-9 watt output
- Enclosure: Totally enclosed
- Bearings: Self-lubricating, long life unit bearing design
- Duty: Continuous air over
- Insulation/Protection: Class B. Impedance and thermally protected
- Operating Range: Standard operating temperatures: -40°F to 104°F
- Approvals: UL and CSA
- Foot mounting: 2 feet with 4 tapped holes
- Rotation: CCW and CW

BENEFITS:

- Drop-in replacement for existing unit bearing shaded pole motors
- Wide range of application compatibility
- Long life OEM designs

STOCK NUMBER	MOTOR DIA	WATTS	RPM	SPD	VOLTS	AMPS	ROT (OSE)	BRNG	ENCLOSURE	SHAFT DIA LENGTH	BODY LENGTH	CROSS REFERENCE	NOTES
UB550	2 5/8	2	1550	1	115	0.22	CW	Unit	Totally Encl.	1/4 x 20 Thread	2 5/8	N/A	
UB551	2 5/8	2.3	1300	1	115	0.15	CCW	Unit	Totally Encl.	1/4 x 20 Thread	2 5/8	N/A	
UB552	2 5/8	2.3	1300	1	230	0.08	CW	Unit	Totally Encl.	1/4 x 20 Thread	2 5/8	N/A	
UB553	2 5/8	2.3	1300	1	230	0.08	CCW	Unit	Totally Encl.	1/4 x 20 Thread	2 5/8	N/A	
UB554	2 5/8	4	1450	1	115	0.29	CW	Unit	Totally Encl.	1/4 x 20 Thread	2 5/8	059110, 05213	
UB555	2 5/8	4	1450	1	115	0.29	CCW	Unit	Totally Encl.	1/4 x 20 Thread	2 5/8	N/A	
UB556	2 5/8	4	1450	1	230	0.14	CW	Unit	Totally Encl.	1/4 x 20 Thread	2 5/8	05223	
UB557	2 5/8	4	1450	1	230	0.14	CCW	Unit	Totally Encl.	1/4 x 20 Thread	2 5/8	N/A	
UB582	2 5/8	5	1550	1	115	0.34	CW	Unit	Totally Encl.	1/4 x 20 Thread	2 5/8	N/A	
UB583	2 5/8	5	1550	1	115	0.34	CCW	Unit	Totally Encl.	1/4 x 20 Thread	2 5/8	N/A	
UB558	2 5/8	6	1550	1	115	0.36	CW	Unit	Totally Encl.	1/4 x 20 Thread	2 7/8	05313	
UB559	2 5/8	6	1550	1	115	0.36	CCW	Unit	Totally Encl.	1/4 x 20 Thread	2 7/8	N/A	
UB560	2 5/8	6	1550	1	230	0.18	CW	Unit	Totally Encl.	1/4 x 20 Thread	2 7/8	N/A	
UB562	2 5/8	9	1550	1	115	0.53	CW	Unit	Totally Encl.	1/4 x 20 Thread	2 7/8	05413, 05119	
UB563	2 5/8	9	1550	1	115	0.53	CCW	Unit	Totally Encl.	1/4 x 20 Thread	2 7/8	05414	
UB564	2 5/8	9	1550	1	230	0.27	CW	Unit	Totally Encl.	1/4 x 20 Thread	2 7/8	05423	
UB565	2 5/8	9	1550	1	230	0.27	CCW	Unit	Totally Encl.	1/4 x 20 Thread	2 7/8	N/A	

NOTES	DESCRIPTION
	Stock numbers in bold are recommended stock items.



FASCO® UNIT BEARING SHADED POLE MOTORS - CAST IRON

APPLICATIONS:

Unit bearing shaded pole motors are widely used in industrial and commercial refrigeration for condensing and evaporating units. Also used in freezers, bottle, food and beverage coolers, walk-in and reach-in coolers and ventilating units. They are suitable for all angle operation and offer multiple mounting features.

FEATURES:

- Type: 3.3" AC / shaded pole / 4 pole / single speed
- Range: From 2 to 50 watt output
- Enclosure: Totally enclosed and open ventilated
- Bearings: Self-lubricating, long life unit bearing design
- Duty: Continuous air over
- Insulation/Protection: Class B. Impedance and thermally protected
- Operating Range: Standard operating temperatures: -40°F to 104°F
- Approvals: UL and CSA
- Rear Mounting: 3 tapped holes
- Foot Mounting: 2 feet with 4 tapped holes
- Rotation: CCWOSE and CWOSE

BENEFITS:

- Drop-in replacement for existing unit bearing shaded pole motors
- Wide range of application compatibility
- Long life OEM designs

STOCK NUMBER	MOTOR DIA	WATTS	RPM	SPD	VOLTS	AMPS	ROT (OSE)	BRNG	ENCLOSURE	SHAFT DIA LENGTH	BODY LENGTH	CROSS REFERENCE	NOTES
UB584	2 5/8	2	1550	1	115	0.22	CW	Unit	Totally Encl.	1/4 x 20 Thread	2 7/8	N/A	
UB585	2 5/8	2.3	1300	1	115	0.15	CCW	Unit	Totally Encl.	1/4 x 20 Thread	2 7/8	N/A	
UB586	2 5/8	2.3	1300	1	230	0.08	CW	Unit	Totally Encl.	1/4 x 20 Thread	2 7/8	N/A	
UB587	2 5/8	2.3	1300	1	230	0.08	CCW	Unit	Totally Encl.	1/4 x 20 Thread	2 7/8	N/A	
UB588	2 5/8	4	1450	1	115	0.29	CW	Unit	Totally Encl.	1/4 x 20 Thread	2 7/8	05211	
UB589	2 5/8	4	1450	1	115	0.29	CCW	Unit	Totally Encl.	1/4 x 20 Thread	2 7/8	05212	
UB590	2 5/8	4	1450	1	230	0.14	CW	Unit	Totally Encl.	1/4 x 20 Thread	2 7/8	05221	
UB591	2 5/8	4	1450	1	230	0.14	CCW	Unit	Totally Encl.	1/4 x 20 Thread	2 7/8	05222	
UB592	2 5/8	5	1550	1	115	0.34	CW	Unit	Totally Encl.	1/4 x 20 Thread	2 7/8	N/A	
UB594	2 5/8	6	1550	1	115	0.36	CW	Unit	Totally Encl.	1/4 x 20 Thread	2 7/8	05311	
UB595	2 5/8	6	1550	1	115	0.36	CCW	Unit	Totally Encl.	1/4 x 20 Thread	2 7/8	05312	
UB596	2 5/8	6	1550	1	230	0.18	CW	Unit	Totally Encl.	1/4 x 20 Thread	2 7/8	N/A	
UB597	2 5/8	9	1550	1	115	0.53	CW	Unit	Totally Encl.	1/4 x 20 Thread	2 7/8	05411	
UB598	2 5/8	9	1550	1	115	0.53	CCW	Unit	Totally Encl.	1/4 x 20 Thread	2 7/8	05412	
UB599	2 5/8	9	1550	1	230	0.27	CW	Unit	Totally Encl.	1/4 x 20 Thread	2 7/8	05421	
UB600	2 5/8	9	1550	1	230	0.27	CCW	Unit	Totally Encl.	1/4 x 20 Thread	2 7/8	05422	
UB566	2 5/8	16	1550	1	115	0.80	CW	Unit	Totally Encl.	1/4 x 20 Thread	3 1/32	05811	
UB567	2 5/8	16	1550	1	115	0.80	CCW	Unit	Totally Encl.	1/4 x 20 Thread	3 1/32	05812	
UB568	2 5/8	16	1550	1	230	0.40	CW	Unit	Totally Encl.	1/4 x 20 Thread	3 1/32	05821	
UB569	2 5/8	16	1550	1	230	0.40	CCW	Unit	Totally Encl.	1/4 x 20 Thread	3 1/32	05822	
UB570	3 7/8	25	1500	1	115	1.10	CW	Unit	Totally Encl.	1/4 x 20 Thread	3 3/5	N/A	
UB571	3 7/8	25	1500	1	115	1.10	CCW	Unit	Totally Encl.	1/4 x 20 Thread	3 3/5	N/A	
UB572	3 7/8	25	1500	1	230	0.60	CW	Unit	Totally Encl.	1/4 x 20 Thread	3 3/5	N/A	
UB573	3 7/8	25	1500	1	230	0.60	CCW	Unit	Totally Encl.	1/4 x 20 Thread	3 3/5	N/A	
UB574	3 7/8	35	1500	1	115	1.40	CW	Unit	Totally Encl.	1/4 x 20 Thread	3 3/5	05711	
UB575	3 7/8	35	1500	1	115	1.40	CCW	Unit	Totally Encl.	1/4 x 20 Thread	3 3/5	N/A	
UB576	3 7/8	35	1500	1	230	0.70	CW	Unit	Totally Encl.	1/4 x 20 Thread	3 3/5	05721	
UB577	3 7/8	35	1500	1	230	0.70	CCW	Unit	Totally Encl.	1/4 x 20 Thread	3 3/5	N/A	
UB578	3 7/8	50	1500	1	115	1.70	CW	Unit	Open Vent	3/8 x 1 1/2 Flat	4 2/3	05511	
UB579	3 7/8	50	1500	1	115	1.70	CCW	Unit	Open Vent	3/8 x 1 1/2 Flat	4 2/3	N/A	
UB580	3 7/8	50	1500	1	230	0.85	CW	Unit	Open Vent	3/8 x 1 1/2 Flat	4 2/3	05521	
UB581	3 7/8	50	1500	1	230	0.85	CCW	Unit	Open Vent	3/8 x 1 1/2 Flat	4 2/3	N/A	

NOTES	DESCRIPTION
	Stock numbers in bold are recommended stock items.



CENTURY® UNIT BEARING MOTORS

MANUFACTURED BY ELECTRIC MOTORS & SPECIALTIES*
MADE IN THE USA



APPLICATIONS:

Unit bearing shaded pole motors are widely used in industrial and commercial refrigeration for condensing and evaporating units. Also used in freezers, bottle, food and beverage coolers, walk-in and reach-in coolers and ventilation units. They are suitable for all angle operation and offer multiple mounting features.

15-35 WATT (1/50 TO 1/20 HP)

FEATURES:

- High efficiency
- Cast iron
- Fan motors
- Horizontal and shaft up mounting only

BENEFITS:

- Drop-in replacement for existing unit bearing shaded pole motors
- Wide range of application compatibility
- Long life OEM designs

STOCK NUMBER	WATT OUTPUT	RPM	VOLTS	AMPS	ROT	SHAFT DIA LENGTH	EMS NUMBER	OEM PART NUMBER	FIG	NOTES
■ 277	15	1500	115	.60	CCWLE	5/16 x 7	ESPOL15EMJR11	240366	A	
292	15	1500	115	.60	CCWLE	5/16 x 5	ESP-L15EMJR1B2		A	
296	15	1500	115	.60	CCWLE	5/16 x 9	ESP-L15EMJR17		A	12
■ 246	16	1500	115	.80	CWLE	1/4 x 20 Thread	ESPL16EM1		B	
247	16	1500	115	.80	CCWLE	1/4 x 20 Thread	ESPL16EMR1		B	
248	16	1500	230	.40	CWLE	1/4 x 20 Thread	ESPL16EM2		B	
249	16	1500	230	.40	CCWLE	1/4 x 20 Thread	ESPL16EMR2		B	
■ 297	25	1500	115	1.1	CCWLE	5/16 x 7	ESPL25MJR1B1		A	12
■ 250	25	1500	115	1.1	CWLE	1/4 x 20 Thread	ESPL25EM1		B	
251	25	1500	115	1.1	CCWLE	1/4 x 20 Thread	ESPL25EMR1		B	
252	25	1500	230	.60	CWLE	1/4 x 20 Thread	ESPL25EM2		B	
253	25	1500	230	.60	CCWLE	1/4 x 20 Thread	ESPL25EMR2		B	
■ 254	35	1500	115	1.4	CWLE	1/4 x 20 Thread	ESPL35EM1	810M035A29	B	
255	35	1500	115	1.4	CCWLE	1/4 x 20 Thread	ESPL35EMR1		B	
■ 256	35	1500	230	.70	CWLE	1/4 x 20 Thread	ESPL35EM2	810M035A21, A28	B	
257	35	1500	230	.70	CCWLE	1/4 x 20 Thread	ESPL35EMR2		B	

NOTES	DESCRIPTION
■	OEM replacement, see pages 30-43.
12	Pin hole in shaft.
Stock numbers in bold are recommended stock items.	

FIG A



FIG B



*EM&S is believed to be a trademark or trade name of Electric Motors & Specialties, LLC and is not owned or controlled by Regal Beloit Corporation.

CENTURY® UNIT BEARING MOTORS

MANUFACTURED BY ELECTRIC MOTORS & SPECIALTIES*

MADE IN THE USA



APPLICATIONS:

Unit bearing shaded pole motors are widely used in industrial and commercial refrigeration for condensing and evaporating units. Also used in freezers, bottle, food and beverage coolers, walk-in and reach-in coolers and ventilating units. They are suitable for all angle operation and offer multiple mounting features.

50-75 WATT (1/15 HP)

FEATURES:

- High efficiency
- Cast iron
- Fan motors
- Horizontal and shaft up mounting only

BENEFITS:

- Drop-in replacement for existing unit bearing shaded pole motors
- Wide range of application compatibility
- Long life OEM designs

STOCK NUMBER	WATT OUTPUT	RPM	VOLTS	AMPS	ROT	SHAFT DIA LENGTH	EMS NUMBER	OEM PART NUMBER	FIG	NOTES
■ 258	50	1500	115	1.7	CWLE	3/8 x 1 1/2	ESPOL50EM1	050-0244-01	A	
■ 291	50	1500	115	1.7	CWLE	5/16 x 3	ESPOL50EM1B1	134350000	B	
■ 259	50	1500	115	1.7	CCWLE	3/8 x 1 1/2	ESPOL50EMR1		A	11
■ 289	50	1500	115	1.7	CWLE	3/8 x 1 1/2	ESPOL50EM13	998-1008-00	C	13
■ 9220	50	1500	115	1.7	CW	1/4 x 3/8	ESP-OL50EM16H	050-03441-01	D	
■ 260	50	1500	230	.85	CWLE	3/8 x 1 1/2	ESPOL50EM2	050-0244-00	A	
■ 9200	50	1500	208-230	1.2	CWLE	3/8 x 1 1/4	ESPOL60EM2		D	11
■ 261	50	1500	230	.85	CCWLE	3/8 x 1 1/2	ESPOL50EMR2		E	11
■ 276	50	1500	230	.85	CCWLE	5/16 x 2 1/2	ESPOL50EMJR21	810M050A62	F	
■ 285	50	1500	230	.85	CWLE	5/16 x 1 1/2	ESPOL50EM2B		F	
■ 288	50	1500	230	.85	CWLE	3/8 x 1 1/2	ESPOL50EM26	998-1007-00	C	13
■ 9221	50	1500	208-230	.85	CW	1/4 x 3/8	ESP-OL50EM26H	050-0344-00	D	
								050-0344-10		
■ 290	50	1500	460	.44	CWLE	3/8 x 1 1/2	ESPOL50EM461	050-0244-02	F	
■ 9222	50	1500	460	.44	CW	1/4 x 3/8	ESP-OL50EM46H	050-0344-03	D	
■ 298	75	1500	230	1.5	CWLE	3/8 x 1 1/2	ESPOL75EM2		F	

NOTES	DESCRIPTION
■	OEM replacement, see pages 30-43.
11	60/50 HZ.
13	Includes mounting bracket and shaft bushing.
Stock numbers in bold are recommended stock items.	

FIG A



FIG B



FIG C



FIG D



FIG E



FIG F



*EM&S is believed to be a trademark or trade name of Electric Motors & Specialties, LLC and is not owned or controlled by Regal Beloit Corporation.

CENTURY® ECM MOTORS

MOTOR DESIGN OFFERS HIGH SAVINGS FOR THE REFRIGERATION MARKET
 MANUFACTURED BY ELECTRIC MOTORS & SPECIALTIES*
 MADE IN THE USA



APPLICATIONS:

Energy saving ECM motors are widely used in industrial and commercial refrigeration evaporator fans and condenser units.

FEATURES:

- Advanced ECM design
- Up to 65% efficiency
- Rain shield
- Cast iron
- Standard two-pin molded plug

- UL approved E128044
- Wide temperature range oil
- Tapped & drilled mounting holes
- Evaporator mount - standard 3-hole, 4-hole Hussmann®* style
- Condenser mount double boss

BENEFITS:

- Drop-in replacement for supermarket case evaporator fans and condenser units
- Replaces 6, 9, 12 and 14-16 watt PSC low efficiency shaded pole motors in evaporator and condenser units

STOCK NUMBER	HP/WATT	RPM	VOLTS	AMPS	ROT OSE	MOUNTING HOLES	BODY LENGTH	LEAD LENGTH (IN)	FIG	NOTES
■ 9207F2	6, 9, 12 Watts	1500	115	.2-.3	CW	5/16 x 7	2.93	15	A	
■ 9208F2	14, 15, 16 Watts	1500	115	.47-.58	CW	5/16 x 5	2.93	15	A	
■ 9211	13 Watts	1500	115	0.47	CW	5/16 x 9	2.93	15	A	
■ 9209L	1/15, 1/20, 1/25	1500	115	1.25	CCW	1/4 x 20 Thread	3.20	16	B	
■ 9210L	1/15, 1/20, 1/25	1500	115	1.25	CW	1/4 x 20 Thread	3.20	16	B	
■ 9209H	1/15, 1/20, 1/25	1500	230	0.77	CCW	1/4 x 20 Thread	3.20	16	B	
■ 9210H	1/15, 1/20, 1/25	1500	230	0.77	CW	1/4 x 20 Thread	3.20	16	B	
■ 9218	9 Watts	1650	115	0.32	CWLE	5/16 x 7	2.75	15	A	
■ 9223	9 Watts	1600	115	0.29	CWLE	1/4 x 20 Thread	2.80	13	C	
■ 9219	16 Watts	1850	115	0.40	CWLE	1/4 x 20 Thread	2.75	15	C	

NOTES	DESCRIPTION
■	OEM replacement, see pages 30-43.
Stock numbers in bold are recommended stock items.	

FIG A



FIG B



FIG C



*EM&S is believed to be a trademark or trade name of Electric Motors & Specialties, LLC and is not owned or controlled by Regal Beloit Corporation.

*Hussmann is believed to be the trademark and or trade name of Hussmann Corporation and is not owned or controlled by Regal Beloit Corporation.

FASCO® 4.4 DIAMETER MOTORS - GE®* 21/29 FRAME

REFRIGERATION FAN MOTORS

APPLICATIONS:

4.4 frame motors are widely used in commercial refrigeration walk-in and beverage coolers and display cases.

FEATURES:

- 115/208-230 VAC
- Thermally protected
- UL recognized
- CSA certified
- Mechanically reversible
- 3/8" shaft diameter with adapter to convert to 1/2" diameter
- Weld nuts on a 3.5" B.C. for stud mount
- Extended hubs with rubber rings for base mount
- Can be operated on 50 HZ with air-over applications
- Interchangeable with 4.4" & 5.0" refrigeration motors

BENEFITS:

- Wide array of application compatibility
- Drop-in replacement for existing refrigeration fan motors

STOCK NUMBER	TYPE	HP	VOLTS	RPM	SPD	AMPS	ENCLOSURE	ROT	BRNG	SHAFT DIM	BODY LENGTH	CROSS REFERENCE	FIG	NOTES
D484	SP	1/20	115/208-230	1550	1	2.2-1.1	Open Vent.	CW	SLV	3/8 X 3 1/8	4	GE 2341,2342	A	
D482	SP	1/15	115/208-230	1550	1	3.2-1.6	Open Vent.	CW	SLV	3/8 X 3 1/8	4	GE 2241,2242	B	
D480	SP	1/10	115/208-230	1550	1	4.5-2.2	Open Vent.	CW	SLV	3/8 X 3 1/8	4 5/8	GE 2141,2142	C	
D485	SP	1/20	115/208-230	1550	1	2.2-1.1	Open Vent.	CCW	SLV	3/8 X 3 1/8	4	GE 2331, 2332	D	
D483	SP	1/15	115/208-230	1550	1	3.2-1.6	Open Vent.	CCW	SLV	3/8 X 3 1/8	4	GE 2231,2232	E	
D481	SP	1/10	115/208-230	1550	1	4.5-2.2	Open Vent.	CCW	SLV	3/8 X 3 1/8	4 5/8	GE 2131, 2132	F	

FIG A



FIG B



FIG C



FIG D



FIG E



FIG F



*GE is believed to be a trademark or trade name of General Electric Company and is not owned or controlled by Regal Beloit Corporation.

CENTURY® 5" DIAMETER STOCK MOTORS - GE®* 21/29 FRAME

REFRIGERATION - UNIT HEATERS - SPACE HEATERS - MECHANICALLY REVERSIBLE

APPLICATIONS:

21-29 Frame motors are used on many popular commercial condensing units. Also used on unit cooler fans and blowers, refrigeration cabinets and air moving applications.

FEATURES:

- 21/29 Frame refrigeration replacements
- Base mounting available
- Continuous duty, air-over
- Easy mechanical reversing
- Drain holes
- Extra long 30" leads
- Thermally protected
- 60 Hz
- Fits Genteq® motor base
- 2-1/4" Mounting rings included**
- For 1/2" shaft applications (use stock no. 1306A shaft bushing)**
- Holes provided for conduit connector
- Shaded pole
- Sleeve bearing
- 4 Tapped 10-32 holes for shaft end mounting
- Stock no. 2087A mounting studs**

BENEFITS:

- Designed for easy mechanical reversing
- Wide array of application compatibility

STOCK NUMBER	HP	RPM	SPEEDS	VOLTS	AMPS	SHAFT DIA & LENGTH	ROT	BODY LENGTH	CROSS REFERENCE	BASE NUMBER	FIG	NOTES
▲ 604	1/20	1050	1	115/230	2.8/1.4	3/8 X 3 1/4	CWSE	4 1/4	2321, 2322	1207	A	23
610	1/20	1550	1	115/230	2.4/1.2	3/8 X 3 1/4	CWSE	4 1/4	2341, 2342	1207	A	23
611	1/20	1550	1	115/230	2.4/1.2	3/8 X 3 1/4	CCWSE	4 1/4	2331, 2332	1207	A	23
▲ 606	1/15	1050	1	115/230	3.8/1.9	3/8 X 3 1/4	CWSE	4 1/2	2223		A	23
612A	1/15	1550	1	115/208-230	2.8/1.4	3/8 X 3 1/4	CWSE	4 1/2	2241, 2242		A	23
613A	1/15	1550	1	115/208-230	2.8/1.4	3/8 X 3 1/4	CCWSE	4 1/2	2231, 2232		A	23
9667	1/12	1050	1	115	1.8	3/8 X 2	REV	5 3/4	2928		B	11.22, 24
▲ 9669	1/12	1050	1	208-230	0.61	3/8 X 2	REV	5 3/4	2954		B	11.22, 24
9666	1/12	1550	1	115	1.6	3/8 X 2	REV	5 3/4	2927		B	11.22, 24
▲ 9668	1/12	1550	1	208-230	0.65	3/8 X 2	REV	5 3/4	2953		B	11.22, 24
608	1/10	1050	1	115/230	4.6/2.3	3/8 X 3 1/4	CWSE	4 3/4	2121, 2122	2089	A	23
609	1/10	1050	1	115/230	4.6/2.3	3/8 X 3 1/4	CCWSE	4 3/4	2113	2089	A	23
614	1/10	1550	1	115/230	4.4/2.2	3/8 X 3 1/4	CWSE	4 3/4	2141, 2142	2089	A	23
615	1/10	1550	1	115/230	4.4/2.2	3/8 X 3 1/4	CCWSE	4 3/4	2131, 2132	2089	A	23

NOTES	DESCRIPTION
▲	Item to be discontinued when stock is depleted.
**	Accessories see page 45.
11	60/50 HZ.
22	Permanent split capacitor.
23	When using U.E. base, add (2) 1221A adapter rings to "each" mounting ring.
24	TEAO

FIG A



FIG B



*GE is believed to be a trademark or trade name of General Electric Company and is not owned or controlled by Regal Beloit Corporation.

CENTURY® 5" DIAMETER STOCK MOTORS - GE®* 21/29 FRAME

REFRIGERATION - UNIT HEATERS - SPACE HEATERS - MECHANICALLY REVERSIBLE

APPLICATIONS:

21-29 Frame motors are used on many popular commercial condensing units. Also used on unit cooler fans and blowers, refrigeration cabinets, unit heaters, space heaters, remote air conditioners and other air moving applications. Four ratings replaced 21 of GE's 21/29 frame designs.

FEATURES:

- 5" Diameter motors
- All angle sleeve bearing
- Auto protector
- Base and mounting clamps included
- Grommeted lead exit
- Mechanically reversible in the field
- Open enclosure
- Shaded pole
- UL and CSA approved
- Lead exit on shaft end
- 3/8" shaft diameter, 1/2" adapter
- 2-1/4" rubber rings; base mounting
- 30" Color coded leads
- 42 Frame
- 60 HZ

BENEFITS:

- Designed for easy mechanical reversing
- Wide array of application compatibility

STOCK NUMBER	HP	RPM	VOLTAGE	AMPS	FRAME	ROTATION
RF6402	1/10	1050	115/208-230	4.0/2.0	42Y	CWSE
RF6403	1/10	1050	115/208-230	4.0/2.0	42Y	CCWSE
RF4400	1/10	1050	115/208-230	4.0/2.0	42Y	CWSE
RF4401	1/10	1050	115/208-230	4.0/2.0	42Y	CCWSE



*GE is believed to be a trademark or trade name of General Electric Company and is not owned or controlled by Regal Beloit Corporation.

GENTEQ® ARKTIC® 142 MOTORS

APPLICATIONS:

Arctic 142 motors are primarily used in the evaporators of commercial refrigeration walk-in coolers and freezers as well as outdoor condensers, but can be used in many applications demanding high efficiency and dependability with output ratings between 1/5 - 1/3 HP including parallel rack fan motors.

ELECTRICAL SUMMARY

- Voltage: 115 (90-132) or 208-230 (180-264) VAC single phase
- Output: 1/5 and 1/3 HP
- Efficiency: ~77% peak
- Speed Range: 1075 RPM
- Rotation: CW or CCW
- Programmable: The number of speeds, RPM, and rotation come pre-programmed from our factory

MECHANICAL SUMMARY

- Type: NEMA®* 48 frame electronically commutated
- Shaft: 1/2" diameter, single flat
- Enclosure: Totally enclosed – air over required
- Bearing: Ball bearing with low temperature grease
- Mounting: Belly band
- Operating Position: Horizontal or vertical shaft up
- Compliance: RoHS

ENVIRONMENTAL SUMMARY

- Storage Temp: -40°C to 80°C ambient
- Operating Temp: -40°C to 55°C ambient
- Design Life: 10 years, 83,720 hours on time (for typical evaporator fan applications)

STOCK NUMBER	SPEED	HP	RPM	VOLTS	ROTATION	FLA @ NP	BODY LENGTH	SHAFT DIA & LENGTH	FIG	NOTES
▲ 5R002	1	1/5	1075	115	CW	4.6	9.53	1/2 X 4.00	A	11,25
▲ 5R004	1	1/5	1075	230	CW	1.9-2.8	9.59	1/2 X 4.00	B	11,25
5R005	1	1/3	1075	115	CCW	5.8	10.09	1/2 X 4.00	C	11,25
5R007	1	1/3	1075	230	CCW	2.6-3.5	10.09	1/2 X 4.00	D	11,25

NOTES	DESCRIPTION
▲	Item to be discontinued when stock is depleted.
11	50/60 HZ.
25	Ball bearing.

FIG A

FIG B

FIG C

FIG D



*NEMA is believed to be a trademark or trade name of National Electrical Manufacturers Association and is not owned or controlled by Regal Beloit Corporation.

OEM REPLACEMENT MOTORS

ARNEG®*

STOCK NUMBER	WATTS	RPM	SPD	VOLTS	AMPS	ROT	BEARING	ENC	SHAFT DIM	MOTOR DIA	BODY LENGTH	CROSS REFERENCE	FIG	NOTES
EC-HE-0147	12	1450	1	115	0.18	CCW	Ball	Totally Encl	Hub	3.3	3 5/8	34410013 34410009 24681010	A	29,30

FIG A



BAKER®* / HILL PHOENIX*

STOCK NUMBER	WATTS	RPM	VOLTS	AMPS	ROT	CAP	SHAFT DIA & LENGTH	MOTOR DIA	BODY LENGTH	CROSS REFERENCE	FIG	NOTES
9207F2	6, 9, 12	1550	115	.2-.3	CW	SP	1/4 X 3/8	3 1/2	2.93	305606	B	28

FIG B



BALLY®*

STOCK NUMBER	WATTS	RPM	VOLTS	AMPS	ROT	CAP	SHAFT DIA & LENGTH	MOTOR DIA	BODY LENGTH	CROSS REFERENCE	FIG	NOTES
285	50	1550	230	0.85	CWLE	SP	5/16 X 1 1/2	3 7/8	3.77	ESPOL50EM2B	C	

FIG C



NOTES	DESCRIPTION
	SP = Shaded pole.
28	5 Rear mounting holes.
29	ECM-IP series.
30	3 Rear mounting holes.
Stock numbers in bold are recommended stock items.	

*Arneg is believed to be a trademark or trade name of International Arneg Group and is not owned or controlled by Regal Beloit Corporation.

*Bally is believed to be a trademark or trade name of Bally Refrigerated Boxes, Inc and is not owned or controlled by Regal Beloit Corporation.

*Baker / Hill Phoenix is believed to be a trademark or trade name of A Dover Corporation and is not owned or controlled by Regal Beloit Corporation.

OEM REPLACEMENT MOTORS

BOHN™*

STOCK NUMBER	HP	RPM	SPD	VOLTS	AMPS	ROT	CAP	SHAFT DIA & LENGTH	MOTOR DIA	BODY LENGTH	CROSS REFERENCE	FIG	NOTES
D1124	1/20	1550	1	115	2.10	CWSE	SP	1/3 X 3	3.3	2 5/6	5KSM59JSK143S 5KSM59JS5036S	A	27
D1126	1/15	1550/1300	1	208/230	1.10	CWSE	SP	1/3 X 3	3.3	3 3/8	5KSM59LS2262AS	B	27
D1125	1/2 -1/15	1400/1550	1	208-230	0.4/0.5	CCWSE	Included	1/3 X 2 2/3	3.3	3 5/8	7190-0442	C	

FIG A

FIG B

FIG C



BORGEN™*

STOCK NUMBER	WATTS	RPM	VOLTS	AMPS	ROTATION	CAP	SHAFT DIA & LENGTH	MOTOR DIA	BODY LENGTH	CROSS REFERENCE	FIG	NOTES
9207F2	6, 9, 12	1550	115	.2-3	CW	SP	1/4 X 3/8	3 1/2	2.93	39303V	D	28

FIG D



COPELAND™*

STOCK NUMBER	WATTS	RPM	SPD	VOLTS	AMPS	ROT	CAP	SHAFT DIA & LENGTH	MOTOR DIA	BODY LENGTH	CROSS REFERENCE	FIG	NOTES
254	35	1500	1	115	1.40	CWLE	SP	1/4 X 20 THD	3 7/8	3.39	050-0267-0	E	
258	50	1500	1	115	1.70	CWLE	SP	3/8 X 1 1/2	3 7/8	3.78	050-0244-01	F	
260	50	1500	1	230	0.85	CWLE	SP	3/8 X 1 1/2	3 7/8	3.78	050-0244-00	G	
289	50	1500	1	115	1.70	CWLE	SP	3/8 X 1 1/2	3 7/8	3.78	998-1008-00	H	
288	50	1500	1	230	0.85	CWLE	SP	3/8 X 1 1/2	3 7/8	3.78	050-0244-00	I	
276	50	1500	1	230	0.85	CWLE	SP	5/16 X 2 1/2	3 7/8	3.75	050-0264-0	J	
290	50	1500	1	460	0.44	CWLE	SP	3/8 X 1 1/2	3 7/8	3.63	050-0244-02	K	

FIG E

FIG F

FIG G

FIG H

FIG I



FIG J

FIG K



NOTES	DESCRIPTION
	SP = Shaded pole.
27	Shell Turbo 68, low temp oil (-40F).
28	5 Rear mounting holes.
Stock numbers in bold are recommended stock items.	

*Bohn is believed to be a trademark or trade name of Heatcraft Worldwide Refrigeration and is not owned or controlled by Regal Beloit Corporation.

*Borgen is believed to be a trademark or trade name of Borgen Systems and is not owned or controlled by Regal Beloit Corporation.

*Copeland is believed to be a trademark or trade name of Copeland Corporation LLC and is not owned or controlled by Regal Beloit Corporation.

OEM REPLACEMENT MOTORS

COPELAND™*

Continued from page 31

STOCK NUMBER	HP	RPM	SPD	VOLTS	AMPS	ROT	CAP	SHAFT DIA & LENGTH	MOTOR DIA	BODY LENGTH	CROSS REFERENCE	FIG	NOTES
174A	1/6	1625	1	208-230	1.0	REV	5/370	1/2 X 2 1/2	5 5/8	4	S3051	A	
OCP0251	1/6	1400/1625	1	230	1.5	CWLE	Included	1/2 X 2 1/2	5	3 7/8	322P913 050-0251-00 6128	B	11
OCP1024	1/4	1625	1	208-230	1.5	CWLE	5/370	1/2 X 3	5 5/8	4 9/16	3047 D783 K6124 5KCP39GGD320T 5KCP39GG3537S	C	
OCP0250	1/4	1400/1625	1	230	1.5	CWLE	Included	1/2 X 2 1/2	5	3 7/8	322P914 050-0250-00 6129	D	11
OCP0108	1/3	1625	1	208-230	2.6	CWLE	Included	1/2 X 2 1/4	5 5/8	5 3/4	5KCP39KGB906AT 5KCP39KGB906AS 5KCP32KG259S 050-0108-00 050-0018-00 K55ECE2645 K55HXJNJ-2976 K55HXSZJ-8106 3124, 6127, 5KCP32KG175S	E	25
3124	1/3	1625	1	230	3.2	CW	Included	1/2 X 1 1/2	3.3	5 5/6	OCP0108	F	
9220	50 Watts	1500	1	115	1.7	CW	SP	1/4 X 3/8	3 7/8	4 1/6	050-0344-01	G	30
9221	50 Watts	1500	1	208-230	0.85	CW	SP	1/4 X 3/8	3 7/8	4 1/6	050-0344-00 050-0344-10	H	30
9222	50 Watts	1500	1	460	0.44	CW	SP	1/4 X 3/8	3 7/8	4.18	050-0344-03	I	30

FIG A



FIG B



FIG C



FIG D



FIG E



FIG F



FIG G



FIG H



FIG I



NOTES	DESCRIPTION
	SP = Shaded pole.
11	60/50 Hertz.
25	Ball bearing.
30	3 Rear mounting holes.

*Copeland is believed to be a trademark or trade name of Copeland Corporation LLC and is not owned or controlled by Regal Beloit Corporation.

OEM REPLACEMENT MOTORS

CRYSTAL TIPS®*

STOCK NUMBER	WATTS	RPM	SPD	VOLTS	AMPS	ROT	CAP	SHAFT DIA & LENGTH	MOTOR DIA	BODY LENGTH	CROSS REFERENCE	FIG	NOTES
246	16	1550	1	115	0.80	CWLE	SP	1/4 X 20 THD	3 7/8	3.39	879-386857	A	30

FIG A



FEDERAL INDUSTRIES®*

STOCK NUMBER	WATTS	RPM	VOLTS	AMPS	ROT	CAP	SHAFT DIA & LENGTH	MOTOR DIA	BODY LENGTH	CROSS REFERENCE	FIG	NOTES
9207F2	6,9,12	1550	115	.2-3	CW	SP	1/4 X 3/8	3 1/2	2.93	41-17981	B	28

FIG B



GE®* - 44 FRAME

STOCK NUMBER	WATTS	RPM	VOLTS	AMPS	ROT	CAP	SHAFT DIA & LENGTH	MOTOR DIA	BODY LENGTH	CROSS REFERENCE	FIG	NOTES
9218	9	1650	115	0.32	CWLE	SP	1/4 X 3/8	3 1/2	3.53	5443	C	30
9219	16	1850	115	0.40	CWLE	SP	1/4 X 3/8	3 1/2	3.53	5444	D	30
										5SME44GG5014		
										5SME44GG5015		

FIG C



FIG D



NOTES	DESCRIPTION
	SP = Shaded pole.
28	5 Rear mounting holes.
30	3 Rear mounting holes.
Stock numbers in bold are recommended stock items.	

*CrystalTips is believed to be a trademark or trade name of CrystalTips and is not owned or controlled by Regal Beloit Corporation.

*Federal Industries is believed to be a trademark or trade name of Standex International Corporation and is not owned or controlled by Regal Beloit Corporation.

*GE is believed to be a trademark or trade name of General Electric Company and is not owned or controlled by Regal Beloit Corporation.

OEM REPLACEMENT MOTORS

HEATCRAFT™*

STOCK NUMBER	HP	RPM	VOLTS	AMPS	ROT	CAP	SHAFT DIA & LENGTH	BODY LENGTH	CROSS REFERENCE	FIG	NOTES
9721	1/21	1550	115/208-230	1.1/0.5	REV	Included	5/16 X 3 1/4	3 5/8	9656, 9664 D1125, PD1125 PD1127 7190-2969 7190-0442 7190-2084 7071061 25309101	A	11,25, 31,32
992A	1/12	1075	208-230	4.2	REV	Included	1/2 X 2 3/4	6 3/4	GE5KCP39- PGH728T S88-667 SCS05001H- CPM120-3 D863	B	25
9209L	1/15,1/20,1/25	1550	115	1.25	CCW	SP	1/4 x 20 Thread	3.2	22617801 22618001 25307801 25308001	C	
9210L	1/15,1/20,1/25	1550	115	1.25	CW	SP	1/4 x 20 Thread	3.2	22531194	D	
9209H	1/15,1/20,1/25	1550	230	0.77	CCW	SP	1/4 x 20 Thread	0.32	22617701 22617901 25307701 25307901	D	
9210H	1/15,1/20,1/25	1550	230	0.77	CW	SP	1/4 x 20 Thread	3.2	2531195	C	
D1122	1/16	1300/1650	208-230	0.4	CW	Included	1/3 X 3 5/8	3 5/8	7190-2255 25308601	H	
D1123	1/20-1/15	1400/1550	208-230	0.40/0.50	CCW	Included	1/3 X 3 5/8	3 7/8	7190-2285 25309101	E	
▲ C01691	Stack 5/8	3000	120	0.8	CWSE	SP	.18 X 1.8	2 3/8	5036F 5018S 5007S EM691, 85	F	
▲ C01692	Stack 5/8	3000	240	0.32	CWSE	SP	.18 X 1.8	2 3/8	5036G 5018T 5007 EM692, 86	F	
▲ 9217H	1/4	1145	230	1.4	CW	SP	1/2 X 3 3/8	4 3/4	22617501	G	
▲ 9217L	1/4	1145	120	2.8	CCW	SP	1/2 X 3 3/8	4 3/4	22617601	G	

FIG A



FIG B



FIG C



FIG D



FIG E



NOTES	DESCRIPTION
	SP = Shaded pole.
▲	Item to be discontinued when stock is depleted.
11	60/50 Hertz.
25	Ball bearing.
31	Reversing plug.
32	Energy efficient.
Stock numbers in bold are recommended stock items.	

FIG F



FIG G



FIG H



*Heatcraft is believed to be a trademark or trade name of Heatcraft Worldwide Refrigeration and is not owned or controlled by Regal Beloit Corporation.

OEM REPLACEMENT MOTORS

HILL PHOENIX®*

STOCK NUMBER	WATTS	RPM	SPD	VOLTS	AMPS	ROT	BEARING	ENCLOSURE	SHAFT DIM	MOTOR DIA	BODY LENGTH	CROSS REFERENCE	FIG	NOTES
EC-HE-0176	15	1600	1	115	0.22	CCW	Ball	Totally Encl.	Hub	3.3	4	PO78448H	A	20,29

FIG A



HILL REFRIGERATION™**

STOCK NUMBER	HP	RPM	SPD	VOLTS	AMPS	ROT	CAP	SHAFT DIA & LENGTH	MOTOR DIA	BODY LENGTH	CROSS REFERENCE	FIG	NOTES
UB592	5 watts	1550	1	115	0.34	CW		1/4 X 20	3.3	2 7/8		B	
3001	1/3	1625	1	208-230	2.9	CW	Included	1/2 X 3 1/2	5.5/8	4.07	160A	C	
160A	1/3	1625	1	208-230	3	REV	Included	1/2 X 4	5 5/8	4 5/8		D	
OHR1106	1	1075	1	208-230	7.1/6.4	REV	15/370	1/2 X 3 3/4	5 5/8	5 1/2		E	25,31,33

FIG B



FIG C



FIG D



FIG E



HUSSMANN®*

STOCK NUMBER	HP	RPM	SPD	VOLTS	AMPS	ROT	CAP	SHAFT DIA & LENGTH	MOTOR DIA	BODY LENGTH	CROSS REFERENCE	FIG	NOTES
3012	1/5	1075	1	208-230	1.7	CW	Included	1/2 X 1 1/25	3.3	3.98	OHS10206	F	
OHS1004	1/8	1550	1	230	1.00	CWLE	5/370	1/2 X 2	5 5/8	3 3/4	3011 5KSP39DG221S 5KSP39DG4220AS	G	
174A	1/6	1625	1	208-230	1.00	REV	5/370	1/2 X 2 1/2	5 5/8	4	S057	H	

FIG F



FIG G



FIG H



NOTES	DESCRIPTION
20	IP65 certified.
25	Ball bearing.
29	ECM-IP series.
31	Reversing plug.
33	BX Connector.
Stock numbers in bold are recommended stock items.	

*Hill Phoenix is believed to be a trademark or trade name of Dover Corporation and is not owned or controlled by Regal Beloit Corporation.

**Hill Refrigeration is believed to be a trademark or trade name of Hill Refrigeration, Inc. and is not owned or controlled by Regal Beloit Corporation.

*Hussmann is believed to be a trademark or trade name of Hussmann Corporation and is not owned or controlled by Regal Beloit Corporation.

OEM REPLACEMENT MOTORS

HUSSMANN®*

Continued from page 35

STOCK NUMBER	HP	RPM	SPD	VOLTS	AMPS	ROT	CAP	SHAFT DIA & LENGTH	MOTOR DIA	BODY LENGTH	CROSS REFERENCE	FIG	NOTES
OHS10206	1/5	1075	1	208-230	1.30	CWLE	Included	1/2 X 3	5 5/8	4 1/8	1648 K55CLN1782 K55HXKWA8573 3008 3012 5KCP39GG5606S 5KCP39GG765S 5KCP39GGC052T 5KCP39GN765 5KSP39GGA967T P011-96203	A	25
OHS9983	1/2	1725	1	208-230	2.70	CWLE	Included	1/2 X 3 1/2	5 5/8	5 1/8	0644 644 K644 K055SME164467 K55HXCTP9963 K55HXSME-1644 D890 259983	B	11,25
9208F2	14,15,16 Watts	1550	1	115	.47-.58	CW	SP	1/4 X 3/8	3 1/2	2.93	4410546 4410545	C	28
9211	13 Watts	1725	1	115	0.47	CW	SP	1/4 X 3/8	3 1/2	2.93	4410544 4410547	D	28

FIG A



FIG B



FIG C



FIG D



ICE-O-MATIC®*

STOCK NUMBER	WATTS	RPM	SPD	VOLTS	AMPS	ROT	CAP	SHAFT DIA & LENGTH	MOTOR DIA	BODY LENGTH	CROSS REFERENCE	FIG	NOTES
246	16	1500	1	115	0.80	CWLE	SP	1/4 X 20 THD	3 7/8	3.39	9161045-04	E	
254	35	1500	1	115	1.40	CWLE	SP	1/4 X 20 THD	3 7/8	3.39	9161078-01	E	
256	35	1500	1	230	0.70	CWLE	SP	1/4 X 20 THD	3 7/8	3.39	9161078-03 309316-000	E	
260	50	1500	1	230	0.85	CWLE	SP	3/8 X 1 1/2	3 7/8	3.78	319357-000	F	

FIG E



FIG F



NOTES	DESCRIPTION
	SP = Shaded pole.
11	60/50 Hertz.
25	Ball bearing.
28	5 Rear mounting holes.

Stock numbers in bold are recommended stock items.

*Hussmann is believed to be a trademark or trade name of Hussmann Corporation and is not owned or controlled by Regal Beloit Corporation.

*Ice-O-Matic is believed to be a trademark or trade name of Ali Group Company and is not owned or controlled by Regal Beloit Corporation.

OEM REPLACEMENT MOTORS

IMI CORNELIUS®*

STOCK NUMBER	WATTS	RPM	SPD	VOLTS	AMPS	ROT	CAP	SHAFT DIA & LENGTH	MOTOR DIA	BODY LENGTH	CROSS REFERENCE	FIG	NOTES
297	25	1500	1	115	1.1	CCWLE	SP	5/16 X 7	3 7/8	3.17	31-0154	A	12
256	35	1500	1	230	0.70	CWLE	SP	1/4 X 20 THD	3 7/8	3.39	30-9316	B	
291	50	1500	1	115	1.70	CWLE	SP	5/16 X 3	3 7/8	3.80	13435-0000	C	
260	50	1500	1	230	0.85	CWLE	SP	3/8 X 1 1/2	3 7/8	3.78	319352-000	D	

FIG A



FIG B



FIG C



FIG D



KEEPRITE®**

STOCK NUMBER	HP	RPM	SPD	VOLTS	AMPS	ROT	CAP	SHAFT DIA & LENGTH	MOTOR DIA	BODY LENGTH	CROSS REFERENCE	FIG	NOTES
D1120	1/20	1550	1	115	2.1	CW	SP	5/16 X 2 3/4	3.3	3 1/2	7163-8722 1043336	E	
D1121	1/20	1550	1	208-230	1	CW	SP	5/16 X 2 3/4	3.3	3 1/2	7163-8861 1043766	F	

FIG E



FIG F



KELVINATOR®**

STOCK NUMBER	WATTS	RPM	SPD	VOLTS	AMPS	ROT	CAP	SHAFT DIA & LENGTH	MOTOR DIA	BODY LENGTH	CROSS REFERENCE	FIG	NOTES
277	15	1500	1	115	0.60	CCWLE	SP	5/16 X 7	3 7/8	3 1/3	5.024-0366	G	12

FIG G



NOTES	DESCRIPTION
	SP = Shaded pole.
12	Pin hole in shaft.
Stock numbers in bold are recommended stock items.	

*IMI Cornelius is believed to be a trademark or trade name of Cornelius, Inc and is not owned or controlled by Regal Beloit Corporation.

**Keeprite is believed to be a trademark or trade name of KeepRite Refrigeration and is not owned or controlled by Regal Beloit Corporation.

**Kelvinator is believed to be a trademark or trade name of Kelvinator Commercial and is not owned or controlled by Regal Beloit Corporation.

OEM REPLACEMENT MOTORS

KRACK®*

STOCK NUMBER	HP	RPM	SPD	VOLTS	AMPS	ROT	CAP	SHAFT DIA & LENGTH	MOTOR DIA	BODY LENGTH	CROSS REFERENCE	FIG	NOTES
D1129	1/20	1550	1	115/230	0.7/.35	CW	Included	1/3 X 1 2/3	3.3	3 1/8		A	34
D1158	1/20	1550	1	115/208-230	1.4-.8	CW	SP	1/3 x 1 2/3	3.3	3 5/16	Commercial Refrigeration Units	B	
D1189	1/20	1550	1	115/208-230	1.4.76	CW	SP	1/3 X 1 2/3	3.3	3 1/8	11528, 11529 JB2P046N JA2P216N JA2P217N JB2P047N 8351440940 8254111030	C	
D1156	1/15	1630/1550	1	115/208-230	1.90/1.00	CW	SP	1/3 x 3 5/8	3.3	3.4		D	
D1157	1/15	1350/1640	1	115/208-230	1.00/0.38//0.66/0.36	CW	Included	1/3 x 3 3/5	3.3	3.37		E	

FIG A



FIG B



FIG C



FIG D



FIG E



KRAMER TRENTON™*

STOCK NUMBER	HP	RPM	SPD	VOLTS	AMPS	ROT	CAP	SHAFT DIA & LENGTH	MOTOR DIA	BODY LENGTH	CROSS REFERENCE	FIG	NOTES
469	1/12	1050	1	115/230	2.7/1.3	CCWLE	SP	1/2 X 3 3/8	5	3 1/2	DA3G096, 097	F	
D0396	1/20	1450	1	208-230	0.90-1.0	CWSE	SP	1/3 X 2 1/3	3.3	3 1/4		G	
D1152	1/20	1500	1	115	1.70	CW	SP	1/3 X 2 2/3	3.3	2 7/8	5KSM59ES2001	H	
D1154	1/20	1550	1	230	1	CW	SP	1/3 X 2 1/3	3.3	3 1/8	JA2R140N	I	
OKT1026	1/4	1075	1	115/208	3.0/1.5	CCWLE	Included	1/2 X 2 1/2	5 5/8	4 7/8	3128	J	11,25

FIG F



FIG G



FIG H



FIG I



FIG J



NOTES	DESCRIPTION
	SP = Shaded pole.
11	60/50 Hertz.
25	Ball bearing.
34	PSC version of D1189.

*Krack is believed to be a trademark or trade name of Hussmann Corporation and is not owned or controlled by Regal Beloit Corporation.

*KramerTrenton is believed to be a trademark or trade name of Rheem Manufacturing Company is not owned or controlled by Regal Beloit Corporation.

OEM REPLACEMENT MOTORS

KRAMER TRENTON™*

Continued from page 38

STOCK NUMBER	HP	RPM	SPD	VOLTS	AMPS	ROT	CAP	SHAFT DIA & LENGTH	MOTOR DIA	BODY LENGTH	CROSS REFERENCE	FIG	NOTES
OKT3035	1/3	1075	1	115/208-230	6.3/2.8-3.15	CCWOSE	Included	1/2 X 3 1/2	5 5/8	6 9/16	03035 5KCP35MN34S 5KCP9MGC055T 5KCP36MG1385	A	25
OKT3041	1/2	1075	1	208-230	4.3	CCWOSE	Included	1/2 X 3 1/2	5 5/8	7 1/4	03041 5KCP67PN244S 5KCP37PG244S 5KCP39PG054T	B	25,36,37

FIG A



FIG B



KYSOR WARREN™*

STOCK NUMBER	WATTS	RPM	VOLTS	AMPS	ROT	CAP	SHAFT DIA & LENGTH	MOTOR DIA	BODY LENGTH	CROSS REFERENCE	FIG	NOTES
9207F2	6,9,12	1550	115	.2-.3	CW	SP	1/4 X 3/8	3 1/2	2.93	09A10107	C	28

FIG C



LARKIN COIL™*

STOCK NUMBER	HP	RPM	SPD	VOLTS	AMPS	ROT	CAP	SHAFT DIA & LENGTH	MOTOR DIA	BODY LENGTH	CROSS REFERENCE	FIG	NOTES
D1101	1/20	1500	1	115	1.9	CCW	SP	1/3 X 2 1/4	3.3	2 3/4	253-1194 7163-2113	D	27,38
D1103	1/20	1500	1	208-230	1.15	CCW	SP	1/3 X 2 1/4	3.3	3	252-1195 7163-3371	E	27
277	15	1500	1	115	.60	CCWLE	SP	5/16 X 7	3.87	3.32	24-0366	F	

FIG D



FIG E



FIG F



NOTES	DESCRIPTION
	SP = Shaded pole.
25	Ball bearing.
27	Shell Turbo 68, low temp oil (-40F).
28	5 Rear mounting holes.

36	Leads exit is on shaft end.
37	4 Studs on a 5.15" diameter bolt circle.
38	Not a direct replacement for 253-1194, is acceptable substitute.
Stock numbers in bold are recommended stock items.	

*Kramer Trenton is believed to be a trademark or trade name of Kramer Trenton and is not owned or controlled by Regal Beloit Corporation.

*Kysor Warren is believed to be a trademark or trade name of Heatcraft Worldwide Refrigeration and is not owned or controlled by Regal Beloit Corporation.

*Larkin Coil is believed to be a trademark or trade name of Heatcraft Worldwide Refrigeration and is not owned or controlled by Regal Beloit Corporation.

OEM REPLACEMENT MOTORS

MANITOWOC®*

STOCK NUMBER	WATTS	RPM	SPD	VOLTS	AMPS	ROT	CAP	SHAFT DIA & LENGTH	MOTOR DIA	BODY LENGTH	CROSS REFERENCE	FIG	NOTES
250	25	1500	1	115	1.1	CWLE	SP	1/4 X 20THD	3.3	3.39	002412283	A	12
254	35	1500	1	115	1.4	CWLE	SP	1/4 X 20THD	3.3	3.39	002401591	A	
											002412373		
260	50	1500	1	230	.85	CWLE	SP	3/8 X 1 1/2	3.3	3.78	002412353	A	
D1137	1/20	1550	1	208-230	0.34	CCW	Included	1/4 x 2 7/8	3.3	3 3/4	2008253	B	11,25
D1143	1/20	1550	1	115	0.9	CCW	Included	1/4 X 2 7/8	3.3	3 1/2	2008243	C	25,40
D1031	1/5	1050	1	208-230	1.8	CCW	Included	1/2 X 3.05	5	4	2009663	D	11,39
D1029	1/8	1350/1620	1	208-230	0.8	CCW	Included	1/2 X 2 1/4	5	3 3/4	2009653	E	11,39

FIG A

FIG B

FIG C

FIG D

FIG E



MASTER BILT®*

STOCK NUMBER	WATTS	RPM	VOLTS	AMPS	ROT	CAP	SHAFT DIA & LENGTH	MOTOR DIA	BODY LENGTH	CROSS REFERENCE	FIG	NOTES
9208F2	14,15,16	1550	115	.47-.58	CW	SP	1/4 X 3/8	3 1/2	2.93	13-13271	F	28

FIG F



NOTES	DESCRIPTION
	SP = Shaded pole.
11	60/50 Hertz.
12	Pin hole in shaft.
25	Ball bearing.
28	5 Rear mounting holes.
39	Sleeve bearing.
40	60 Hertz.
Stock numbers in bold are recommended stock items.	

*Manitowoc is believed to be a trademark or trade name of Manitowoc Ice and is not owned or controlled by Regal Beloit Corporation.

*Master Bilt is believed to be a trademark or trade name of Standex International Corporation and is not owned or controlled by Regal Beloit Corporation.

OEM REPLACEMENT MOTORS

MCQUAY®*

STOCK NUMBER	HP	RPM	SPD	VOLTS	AMPS	ROT	CAP	SHAFT DIA & LENGTH	MOTOR DIA	BODY LENGTH	CROSS REFERENCE	FIG	NOTES
D1140	1/10-1/12-1/15	1500	3	115	2.2-2.1-1.7	DS	75/370	5 5/8 X 3/8 X 5 5/8	3.3	1 3/4	879-382564B-00	A	
D1141	1/15-1/25-1/35	1000	3	115	1.3-1.1-0.9	DS	4/370	5 5/8 X 3/8 X 5 5/8	3.3	4 3/4	879-382563B-00	B	
D1142	1/15	1500	1	115/230	17-.9	CW	SP	1/3 X 2 1/2	3.3	3 1/2	879-382562B-00	C	41
D1144	1/25-1/35-1/65	1200	3	115	1.1-9-.6	CW	4/370	3/8 X 5 3/8	3.3	4 3/4	BA2H015	D	
D915	3/4-1/2	1075	2	460	2.30/1.70	REV	15/370	5/8 X 5 1/2	3.3	4 5/6	F2417-121479 EWB48A110558AE	E	

FIG A



FIG B



FIG C



FIG D



FIG E



NRC FLORALINE™*

STOCK NUMBER	WATTS	RPM	VOLTS	AMPS	ROT	CAP	SHAFT DIA & LENGTH	MOTOR DIA	BODY LENGTH	CROSS REFERENCE	FIG	NOTES
9207F2	6,9,12	1550	115	.2-3	CW	SP	1/4 X 3/8	3 1/2	2.93	1330010	F	28

FIG F



SCOTSMAN®*

STOCK NUMBER	HP	RPM	SPD	VOLTS	AMPS	ROT	CAP	SHAFT DIA & LENGTH	MOTOR DIA	BODY LENGTH	CROSS REFERENCE	FIG	NOTES
250	25	1500	1	115	1.1	CWLE	SP	1/4 X 20THD	3.3	3.39	18-7200-01	G	
258	50	1500	1	115	1.7	CWLE	SP	3/8 X 1 1/2	3.3	3.78	18-5105-11	H	
260	50	1500	1	230	0.85	CWLE	SP	3/8 X 1 1/2	3.3	3.78	18-5105-02	H	

FIG G



FIG H



NOTES	DESCRIPTION
	SP = Shaded pole.
28	5 Rear mounting holes.
41	Bolt circle = 3.15".
Stock numbers in bold are recommended stock items.	

*McQuay is believed to be a trademark or trade name of McQuay International and is not owned or controlled by Regal Beloit Corporation.

*NRC Floraline is believed to be a trademark or trade name of NRC Incorporated and is not owned or controlled by Regal Beloit Corporation.

*Scotsman is believed to be a trademark or trade name of Ali Group Company and is not owned or controlled by Regal Beloit Corporation.

OEM REPLACEMENT MOTORS

TECUMSEH®*

STOCK NUMBER	HP	RPM	VOLTS	AMPS	ROT	CAP	SHAFT DIA & LENGTH	MOTOR DIA	BODY LENGTH	CROSS REFERENCE	FIG	NOTES
D9487	1/12	1500/1300	230	1.20/1.30	CCW	SP	1/3 X 2 1/6	3.3	4 4/7		A	
D475	1/15	1550	460	0.50	CCW	SP	1/3 X 2 1/2	3.9	4 1/2	810G037A47 5KCP11FG1197CS	B	8,9,10
OTC6004	1/20	1500	230	1.10	CCWSE	SP	5/16 X 2 1/2	5	3 1/16	810S037B01 326P137	C	11
OTC6001	1/15	1500	230	1.30	CCWLE	SP	5/16 X 2 3/4	5	3 1/16	810S050A99 326P136	D	11
OTC1862	1/4	1625	230	1.90	CWLE	Included	1/2 X 2 3/4	5 5/8	4 3/8	TFM1862, 8330 KA55HXGD8330	E	11,25
OTC1864	1/4	1350/1625	380-420/460	0.80/0.95	CWLE	Included	1/2 X 2 3/4	5 5/8	4 3/8	TFM1864, 8331 KA55HGE8331	F	11,25
254	35 watts	1500	115	1.40	CWLE	SP	1/4 X 20 THD	3.3	3.39	810M035A29 TFM-351 ESPL35EM11-C1	G	
256	35 watts	1500	230	0.70	CWLE	SP	1/4 X 20 TDH	3.3	3.39	810M035A28 TFM-352 ESPL35EM21-C1	G	
276	50 watts	1500	230	0.85	CCWLE	SP	5/16 X 2 1/2	3.3	3.75	810M050A62	H	

FIG A



FIG B



FIG C

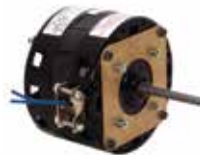


FIG D



FIG E



FIG F



FIG G



FIG H



NOTES	DESCRIPTION
	SP = Shaded pole.
8	Does not have extended hubs or rubber rings for base mount.
9	3.9 diameter.
10	Includes 12 " studs for mounting.
11	60/50 Hertz.
25	Ball bearing.

Stock numbers in bold are recommended stock items.

*Tecumseh is believed to be a trademark or trade name of Tecumseh Products Company LLC and is not owned or controlled by Regal Beloit Corporation.

OEM REPLACEMENT MOTORS

TYLER®*

STOCK NUMBER	HP	RPM	SPD	VOLTS	AMPS	ROT	CAP	SHAFT DIA & LENGTH	MOTOR DIA	BODY LENGTH	CROSS REFERENCE	FIG	NOTES
OTY1024	1/4	1625	1	230	1.90	CCWLE	Included	1/2 X 3	5 5/8	4 5/8	760, D870, 03042, 5KCP39EGC053T, 5KCP39EG755S, 5KCP39EN81S, X270	A	25,42,44,45

FIG A



WITT™*

STOCK NUMBER	HP	RPM	SPD	VOLTS	AMPS	ROT	CAP	SHAFT DIA & LENGTH	MOTOR DIA	BODY LENGTH	CROSS REFERENCE	FIG	NOTES
D1102	1/20	1550	1	115/230	.75-.4	CW	Included	5/16 X 2 5/8	3.3	3 1/2	7190-2158, 8216073, 7190-2159, 8216074	B	

FIG B



ZERO-ZONE®*

STOCK NUMBER	WATTS	RPM	VOLTS	AMPS	ROT	CAP	SHAFT DIA & LENGTH	BODY LENGTH	CROSS REFERENCE	FIG	NOTES
9208F2	14,15,16	1550	115	.47-.58	CW	SP	1/4 X 3/8	2.93	63-0622-1	C	28
9223	9	1600	115	0.29	CW	SP	1/4 X 3/8	2.8	63-0622	D	30

FIG C

FIG D



NOTES	DESCRIPTION
	SP = Shaded pole.
25	Ball bearing.
28	5 Rear mounting holes.
30	3 Rear mounting holes.
42	Resilient mounting rings included.
44	Conduit connector included.
45	Replacing Century® C-Frame motor.

*Tyler is believed to be a trademark or trade name of A Dover Corporation and is not owned or controlled by Regal Beloit Corporation.

*Witt is believed to be a trademark or trade name of Witt and is not owned or controlled by Regal Beloit Corporation.

*Zero-Zone is believed to be a trademark or trade name of Zero Zone, Inc and is not owned or controlled by Regal Beloit Corporation.

PARTS AND ACCESSORIES

FOR UNIT BEARING AND C-FRAME MOTORS

PLASTIC FAN BLADES USED WITH C-FRAME MOTORS

STOCK NUMBER	DIA	HUB I.D.	SHAFT SIZE	NO OF BLADES	ROTATION ¹	FAN TYPE
700027	4.19	Round	0.181	5	CW	C
700047	5.50	Round	.187 OR 3/16	4	CCW	B
700046	5.56	Round	.187 OR 3/16	5	CCW	C
1010784-001	4.62	"D" Shaped	0.181	Impeller	CW/CCW	A

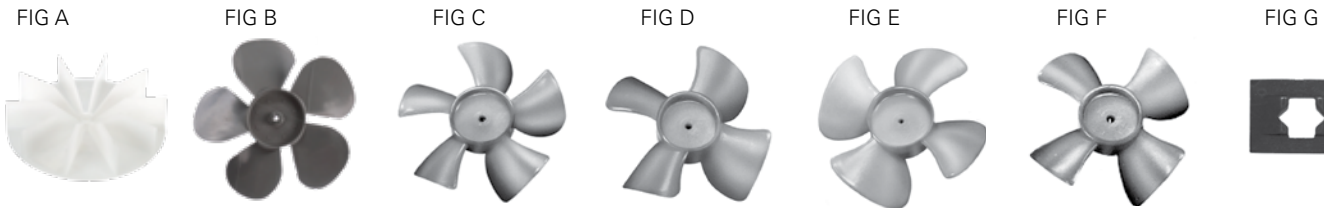


¹ Rotation determined by viewing air discharge side of fan blade.

FASCO® C-FRAME FAN BLADES USED WITH K-LINE MOTORS

STOCK NUMBER	ROTATION	DESCRIPTION	BORE DIA	FAN DIA	FITS SHAFT DIA	FIG	NOTES
K-FAN4032		"D" SHAPED HUB	0.2178	4 5/8		A	
K-FAN4031		ROUND BORE HUB	0.1811	4 5/8		A	
K-FAN6009	CW	"D" SHAPED HUB	0.2178	6 5/8		B	
K-FAN6010	CW	ROUND BORE HUB	0.1811	4		C	
K-FAN6012	CW	ROUND BORE HUB	0.1811	3 1/2		D	
K-FAN6013	CCW	ROUND BORE HUB	0.1811	5 1/2		E	
K-FAN6011	CW	ROUND BORE HUB	0.1811	4		F	
K-FAN6046	CCW	ROUND BORE HUB	0.1811	5 1/2		B	
▲ K-NUT6002		PUSH NUT			0.2178	G	

NOTES	DESCRIPTION
▲	Item to be discontinued when stock is depleted.



UNIT BEARING

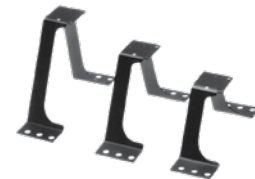
Stock No. 1254A - Rubber Cushion

▲ Item to be discontinued when stock is depleted.



12 Per Pack

STOCK NUMBER	HEIGHT TO MOTOR SHAFT	BRACKET HEIGHT
2271	4 1/8	2 7/32
2272	4 9/16	2 41/64
2274	6 1/4	4 5/16



THREADED SHAFT ADAPTER

Stock No. 1488A - Adapts 1/4" x 20 threaded shaft to 1/4" round shaft.



2 Per Pack

90 DEGREE REFRIGERATION PLUG

Stock No. 2117 - Converts a straight plug to fit application with a right-angle connection.



MOUNTING STUDS

Stock No. 2087A

10-32 X 1"

Collar studs for 5" dia. motors



4 Per Set

CAUTION: Threading longest end into motor can create electrical shock or fire hazards and shorten motor life.

ADAPTER RING

Stock No. 1221A

Two required per mounting ring to adjust from 2 1/4" to 2 1/2" connection. Use to convert Stock No. 1220A mounting ring to larger diameter.



2 Per Pack

STEEL SHAFT ADAPTER BUSHINGS WITH ZINC FINISH

STOCK NUMBER	I.D.	O.D.	LENGTH	PKG
1231A	1/4	5/16	1	5/PKG
1302A	5/16	3/8	1 1/16	5/PKG
1304A	5/16	1/2	1 1/16	5/PKG
1305A	3/8	7/16	1 1/16	5/PKG
1306A	3/8	1/2	1 1/16	5/PKG
1487A	1/2	5/8	1 1/16	5/PKG
1307A*	1/2	5/8	1 1/2	5/PKG
1483A	5/8	3/4	1 1/4	5/PKG



* Split bushing with 3/16" key furnished.

PARTS AND ACCESSORIES

FAN BLADES

UNIT BEARING HUBLESS FAN BLADES

STOCK NUMBER	DIA	PITCH	CW MOTOR AIRFLOW
2211	7	20°	Suction
2212	7	20°	Pusher
2217	8	20°	Suction
2218	8	20°	Pusher

STOCK NUMBER	DIA	PITCH	CW MOTOR AIRFLOW
2235	8 3/4	20°	Suction

STOCK NUMBER	DIA	PITCH	CW MOTOR AIRFLOW
2267	10	22°	Suction
2268	10	29°	Pusher

NOTE: Rotation determined by viewing air discharge side of fan. Fan should be guarded before operating. Tighten set screws securely before operating. Pusher = air over motor and through fan. Suction = air through fan and over motor.

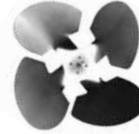
2 & 4 WATT



6 & 9 WATT



9 & 16 WATT



TYPICAL APPLICATIONS:

- Freezers
- Heaters
- Refrigerators

FEATURES:

- 7 to 10 inch diameters
- High quality aluminum blades
- CW fans have hub attached on discharge side

- CCW fans have hub attached on intake side
- Zinc and chromate coated steel hub
- Blades tested at 1000 RPM

5 BLADE, FIXED HUB									
STOCK NUMBER	FAN					0" STATIC PRESSURE			
	ROTATION	DIA (IN)	PITCH (DEG)	BORE (IN)	MAX RPM	CFM	BHP	STD PACK	MAX RPM
5FR727-1	CW	7	28	1/4	3450	450	0.05	10	3450
5FL727-1	CCW	7	28	1/4	3450	450	0.05	10	3450
5FR727-2	CW	7	28	5/16	3450	450	0.05	10	3450
5FL727-2	CCW	7	28	5/16	3450	450	0.05	10	3450
5FR824-1	CW	8	24	1/4	3450	620	0.07	10	3450
5FL824-1	CCW	8	24	1/4	3450	620	0.07	10	3450
5FR824-2	CW	8	24	5/16	3450	620	0.07	10	3450
5FL824-2	CCW	8	24	5/16	3450	620	0.07	10	3450
5FR832-1	CW	8	32	1/4	3450	750	0.11	10	3450
5FL832-1	CCW	8	32	1/4	3450	750	0.11	10	3450
5FR832-2	CW	8	32	5/16	3450	750	0.11	10	3450
5FL832-2	CCW	8	32	5/16	3450	750	0.11	10	3450
5FR926-1	CW	9	25	1/4	3000	800	0.09	10	3000
5FL926-1	CCW	9	25	1/4	3000	800	0.09	10	3000
5FR926-2	CW	9	25	5/16	3000	800	0.09	10	3000
5FL926-2	CCW	9	25	5/16	3000	800	0.09	10	3000
5FR1020-1	CW	10	22	1/4	1725	550	0.02	10	1725
5FL1020-1	CCW	10	22	1/4	1725	550	0.02	10	1725
5FR1020-2	CW	10	22	5/16	1725	550	0.02	10	1725
5FL1020-2	CCW	10	22	5/16	1725	550	0.02	10	1725
5FR1031-2	CW	10	33	5/16	1725	740	0.04	10	1725
5FL1031-2	CCW	10	33	5/16	1725	740	0.04	10	1725

5 BLADE, HUBLESS									
STOCK NUMBER	FAN					0" STATIC PRESSURE			
	ROTATION	DIA (IN)	PITCH (DEG)	BORE (IN)	MAX RPM	CFM	BHP	STD PACK	MAX RPM
5FR1023	CW	10	23	1/4	1550	525	0.02	10	1550
▲ 5FR721	CW	7	21	1/4	1550	300	0.01	10	1550
5FR823	CW	8	23	1/4	1550	400	0.01	10	1550
▲ 5FR925	CW	9	25	1/4	1550	500	0.01	10	1550
▲ 5FR1028	CW	10	28	1/4	1550	700	0.02	10	1550

NOTES	DESCRIPTION
▲	Item to be discontinued when stock is depleted.

FIXED HUB



HUBLESS







Regal Beloit America, Inc.
1325 Heil Quaker Boulevard
LaVergne, TN 37086
PH: 800-672-6495

thedealertools.com
www.regalbeloit.com

APPLICATION CONSIDERATIONS

The proper selection and application of products and components, including the related area of product safety, is the responsibility of the customer. Operating and performance requirements and potential associated issues will vary appreciably depending upon the use and application of such products and components. The scope of the technical and application information included in this publication is necessarily limited. Unusual operating environments and conditions, lubrication requirements, loading supports, and other factors can materially affect the application and operating results of the products and components and the customer should carefully review its requirements. Any technical advice or review furnished by Regal Beloit America, Inc. and/or its affiliates ("Regal") with respect to the use of products and components is given in good faith and without charge, and Regal assumes no obligation or liability for the advice given, or results obtained, all such advice and review being given and accepted at customer's risk.

For a copy of our Standard Terms and Conditions of Sale, please visit <https://www.regalbeloit.com/Terms-and-Conditions-of-Sale>. These terms and conditions of sale, disclaimers and limitations of liability apply to any person who may buy, acquire or use a Regal product referred to herein, including any person who buys from a licensed distributor of these branded products.

Regal, Arctic, Century, Elco, Fasco, Genteq, Kryo, Morrill Motors and 3-in-1 are trademarks of Regal Beloit Corporation or one of its affiliated companies.

©2016, 2019 Regal Beloit Corporation, All Rights Reserved. MCC19008E • Form# MB0085E

